



Fall 2007: Update On Enrollments and Retention Rates

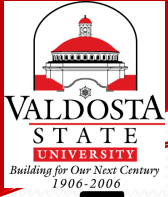
January 2008

Presented by: Kristina M. Cragg, Ph.D.,
Assistant to the President for Strategic Research & Analysis

Produced by: VSU Strategic Research & Analysis

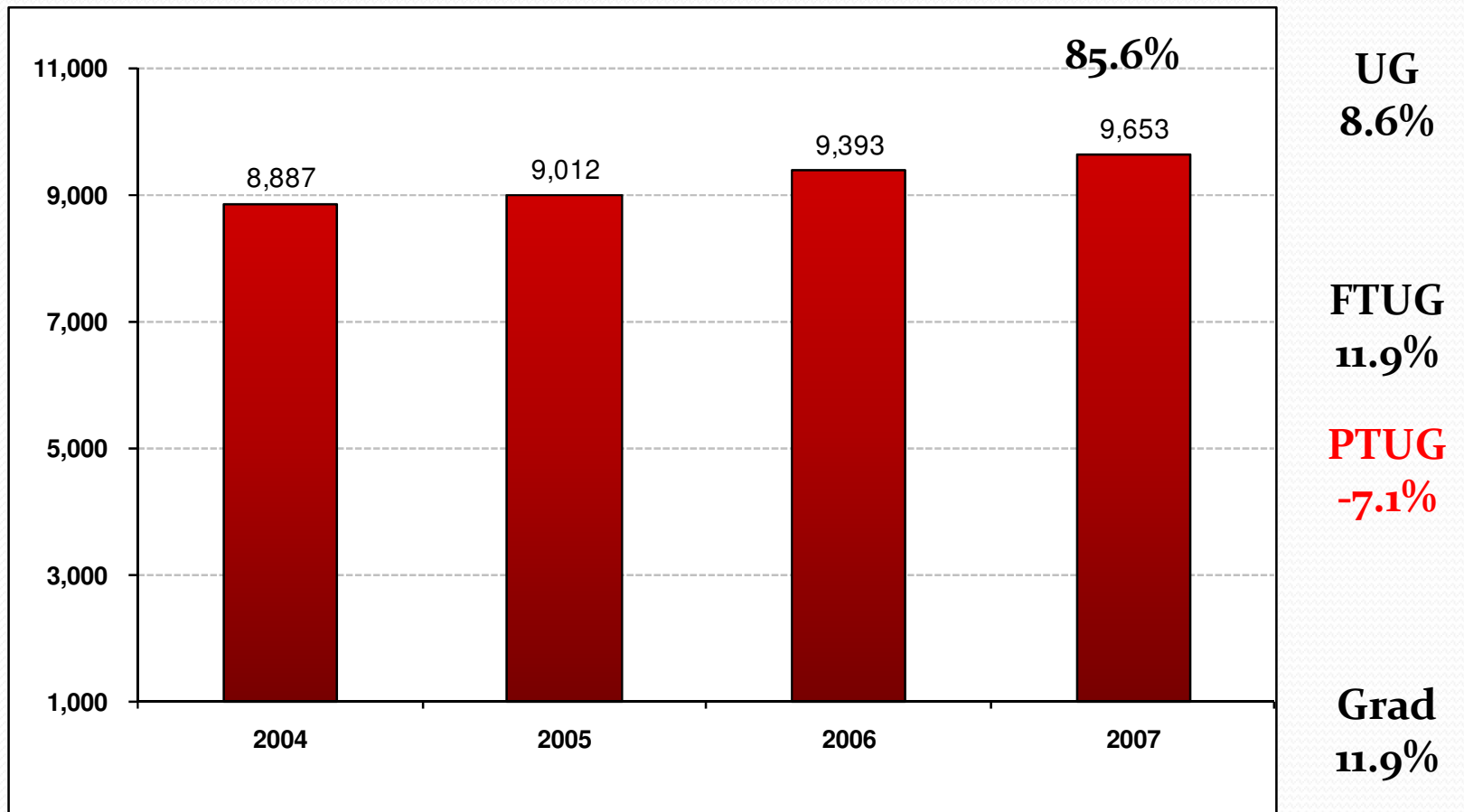
Overview

- Enrollment Patterns
- Retention Data
 - Detailed VSU Data
 - System Comparisons
- Next Steps
 - Phase I – Right Now
 - Phase II – Spring 2008



Enrollment Patterns

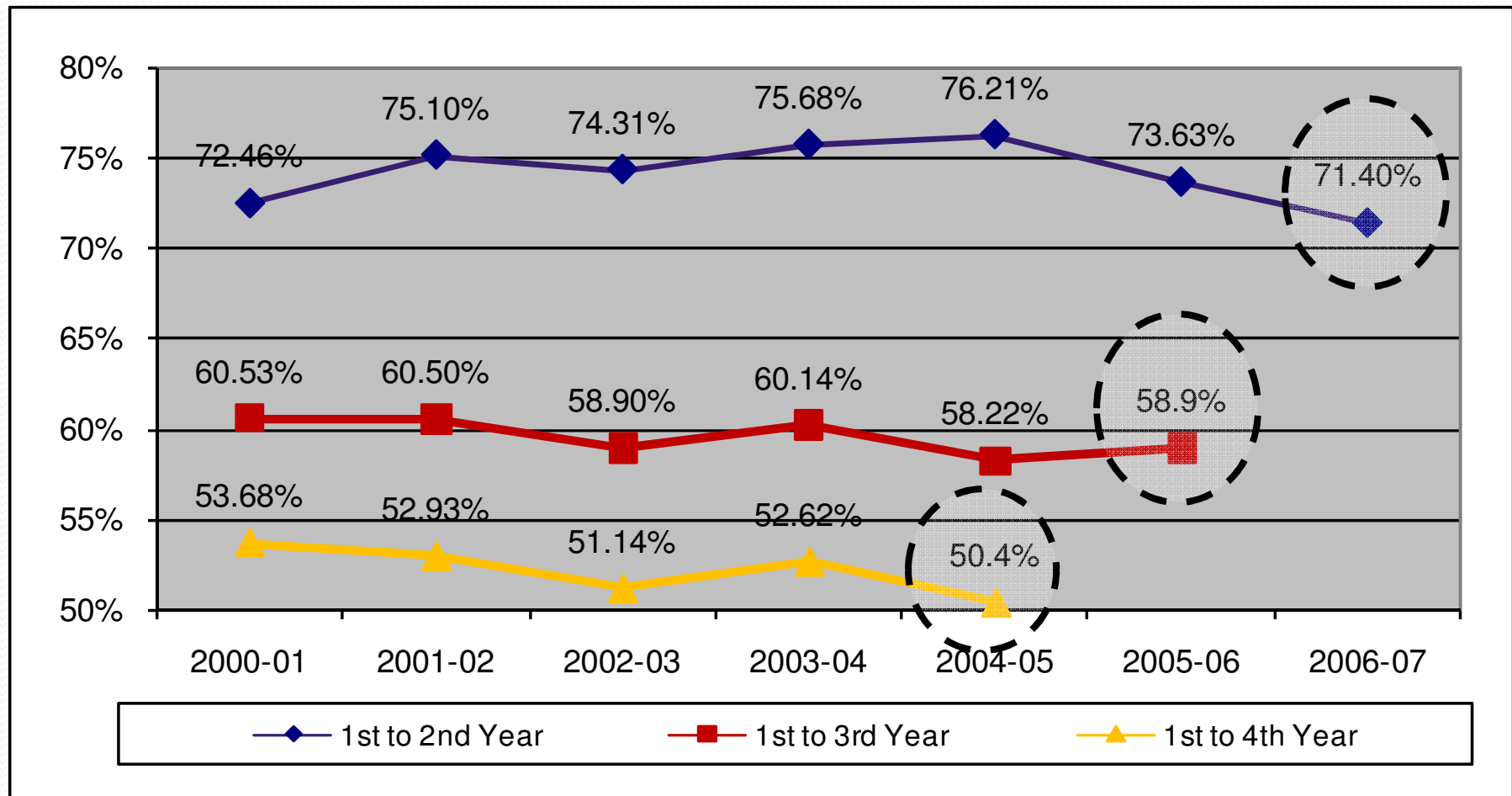
EXHIBIT 1: FALL UNDERGRADUATE ENROLLMENTS, 2004 THROUGH 2007



Source: VSU Strategic Research & Analysis, 2007.

Retention Rates

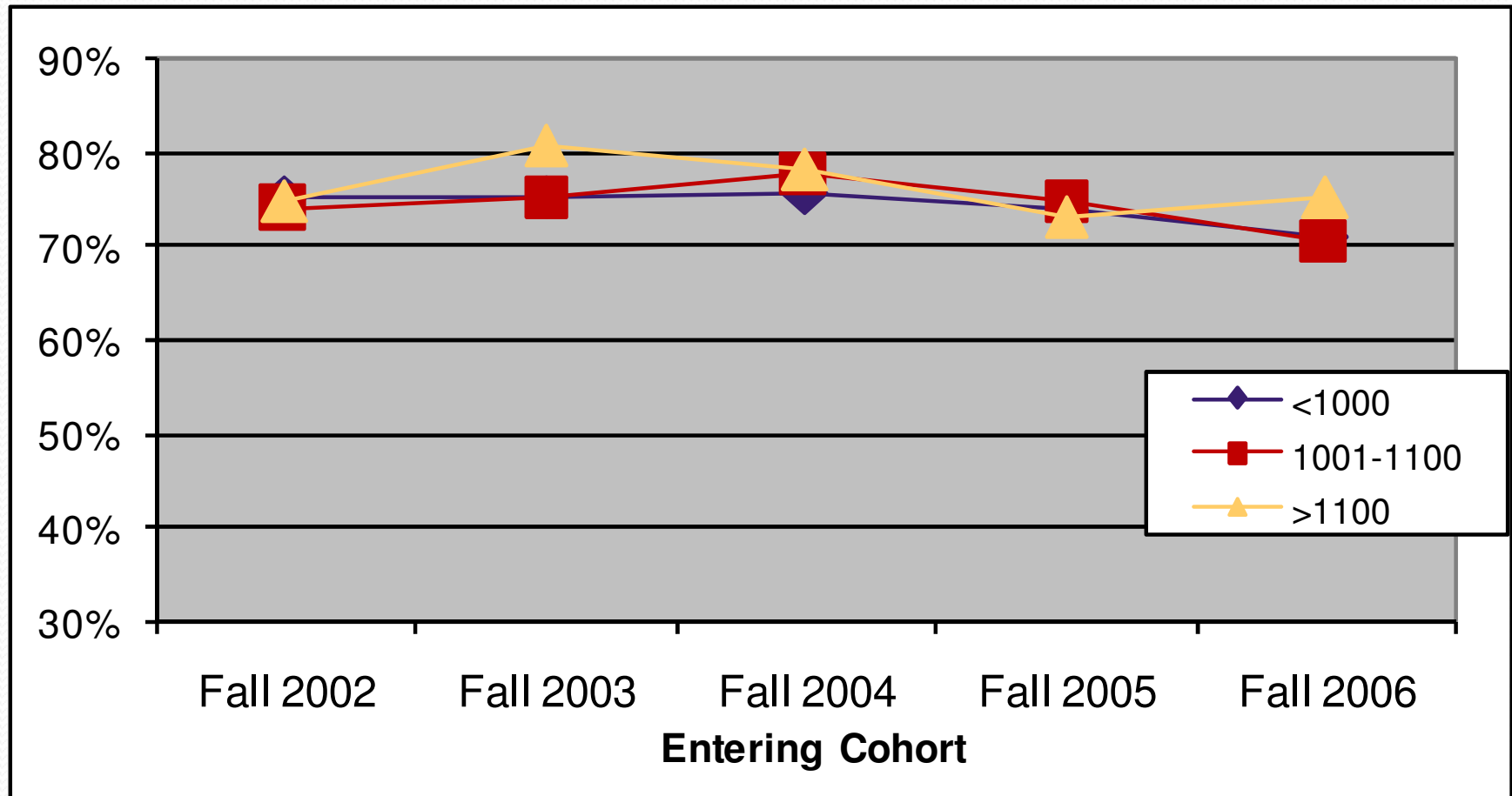
EXHIBIT 2: OVERALL RETENTION RATES 2000-01 THROUGH 2006-07



Source: VSU Strategic Research & Analysis, 2007.

Retention Rates (cont.)

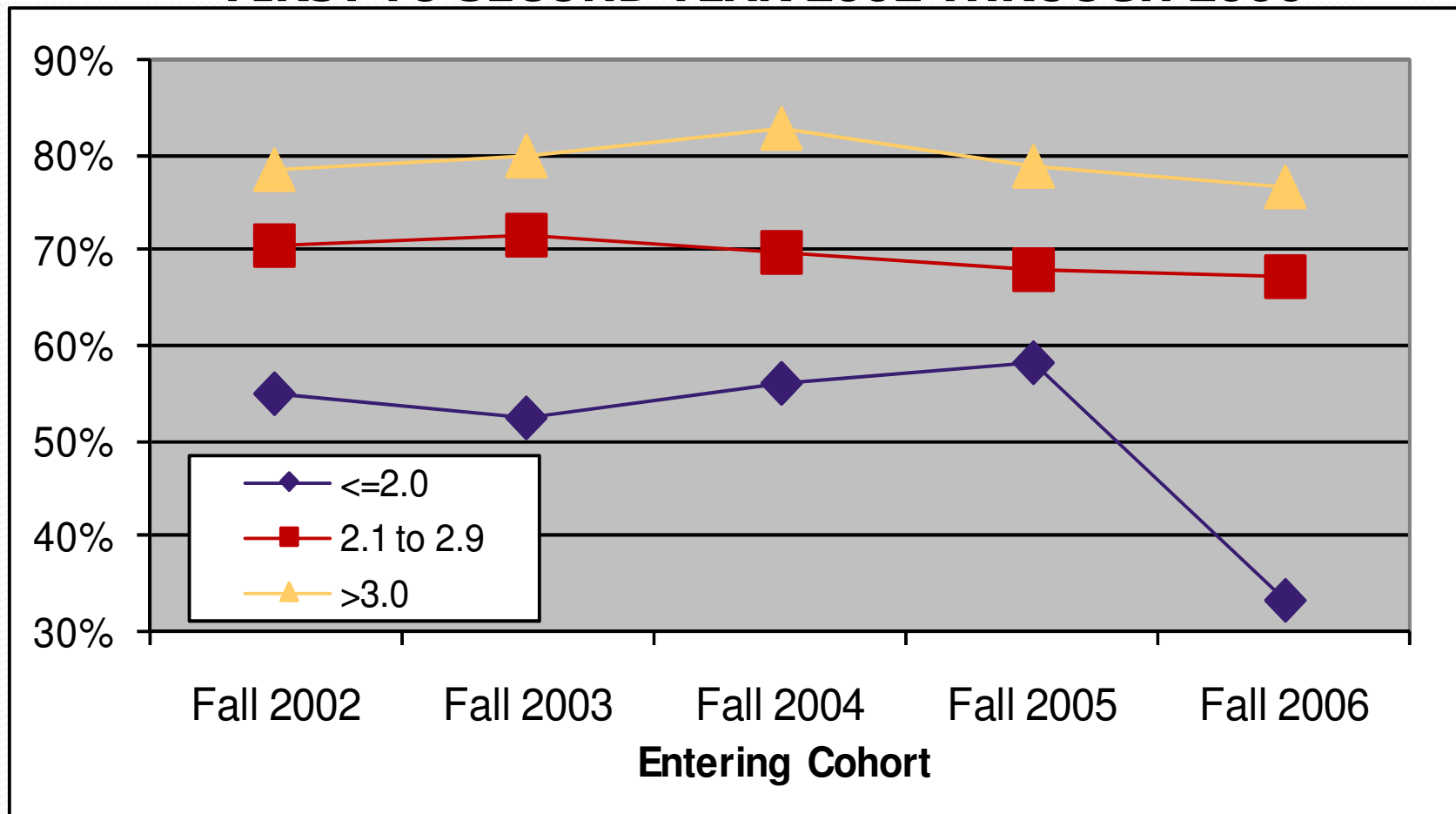
EXHIBIT 3: RETENTION RATES BY SAT SCORE, FIRST TO SECOND YEAR, 2002 THROUGH 2006



Source: VSU Strategic Research & Analysis, 2007.

Retention Rates (cont.)

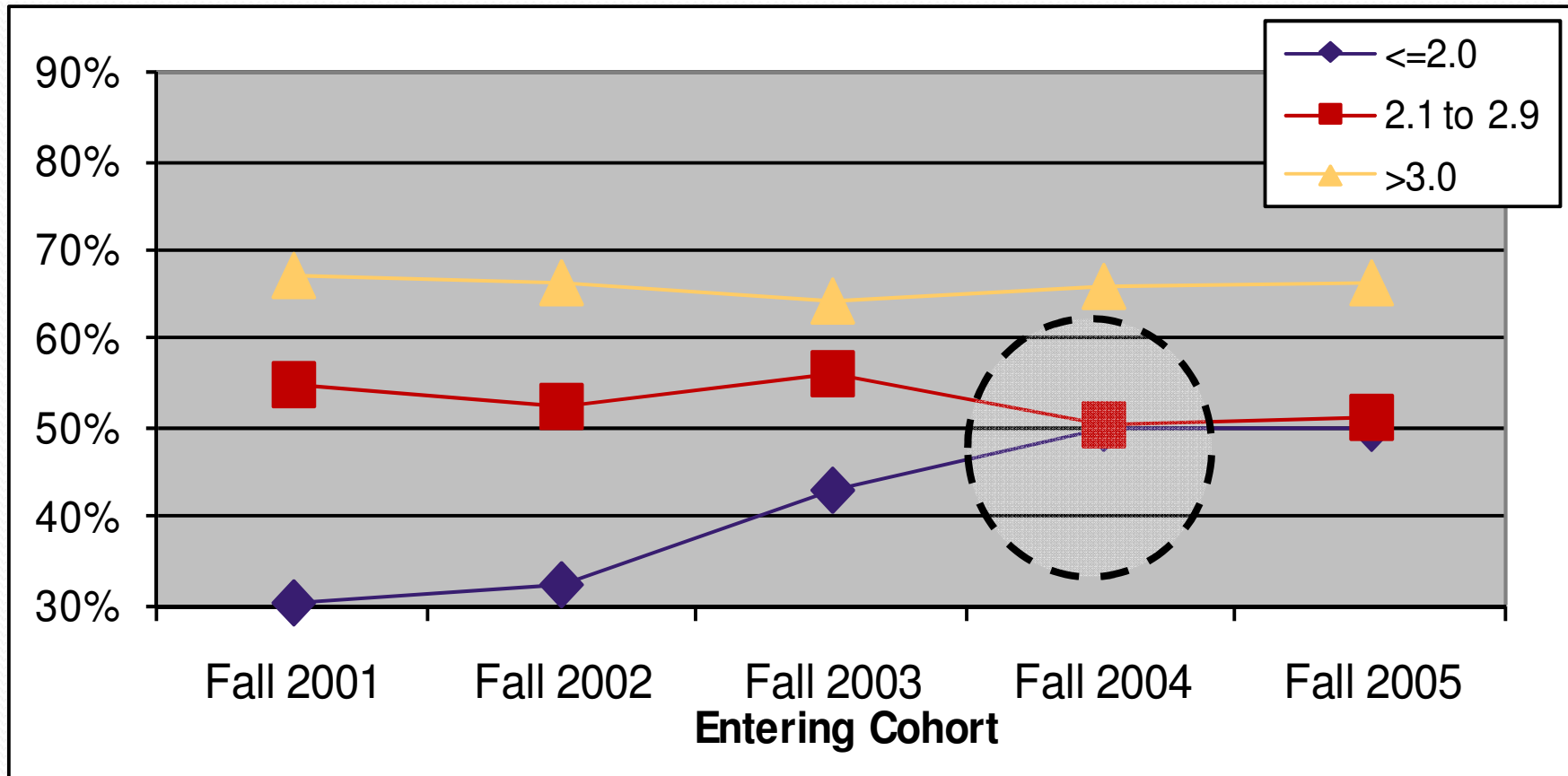
**EXHIBIT 4: RETENTION RATES BY HIGH SCHOOL GPA
FIRST TO SECOND YEAR 2002 THROUGH 2006**



Source: VSU Strategic Research & Analysis, 2007.

Retention Rates (cont.)

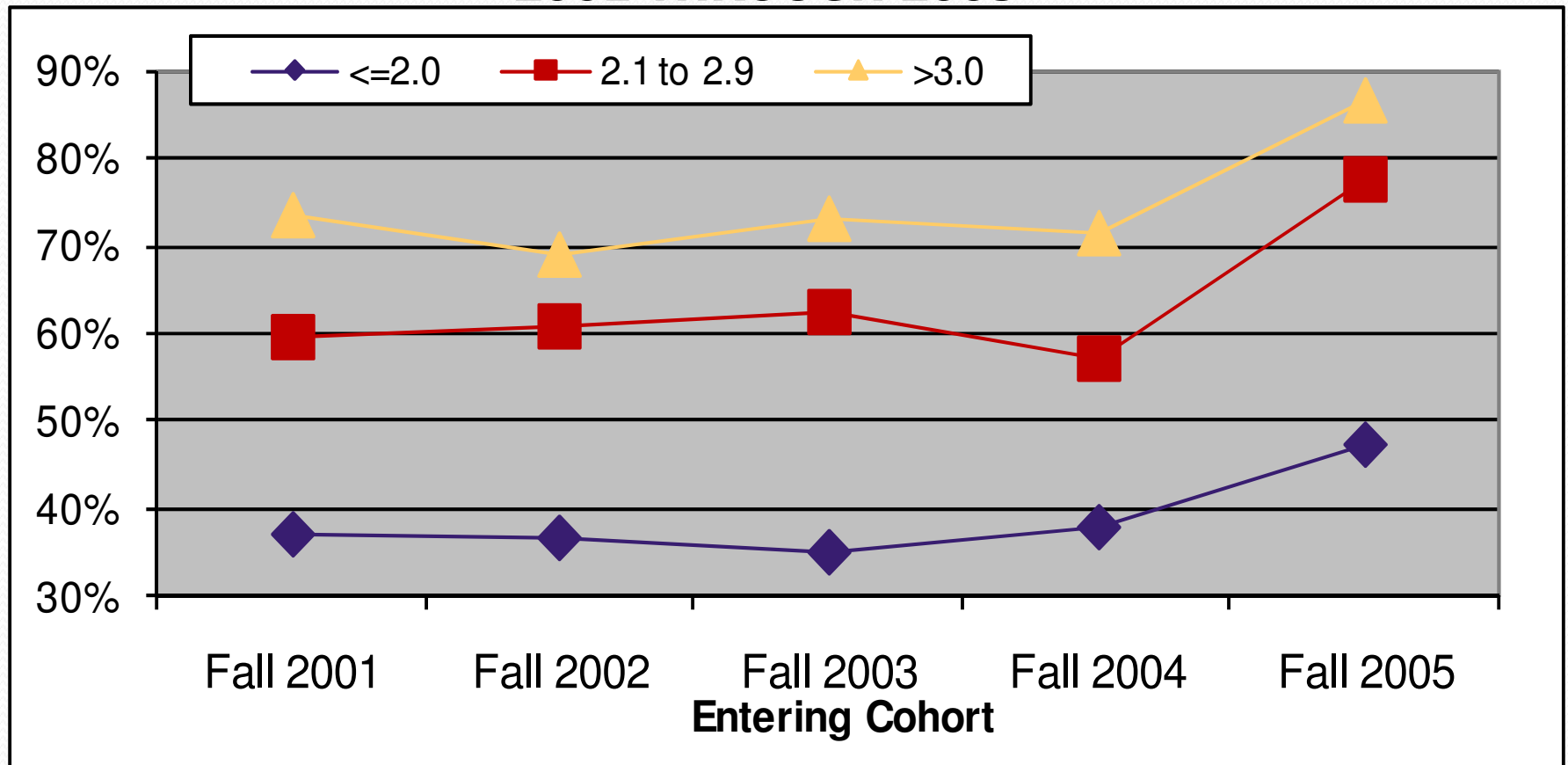
**EXHIBIT 5: RETENTION RATES BY HIGH SCHOOL GPA
FIRST TO THIRD YEAR 2001 THROUGH 2005**



Source: VSU Strategic Research & Analysis, 2007.

Retention Rates (cont.)

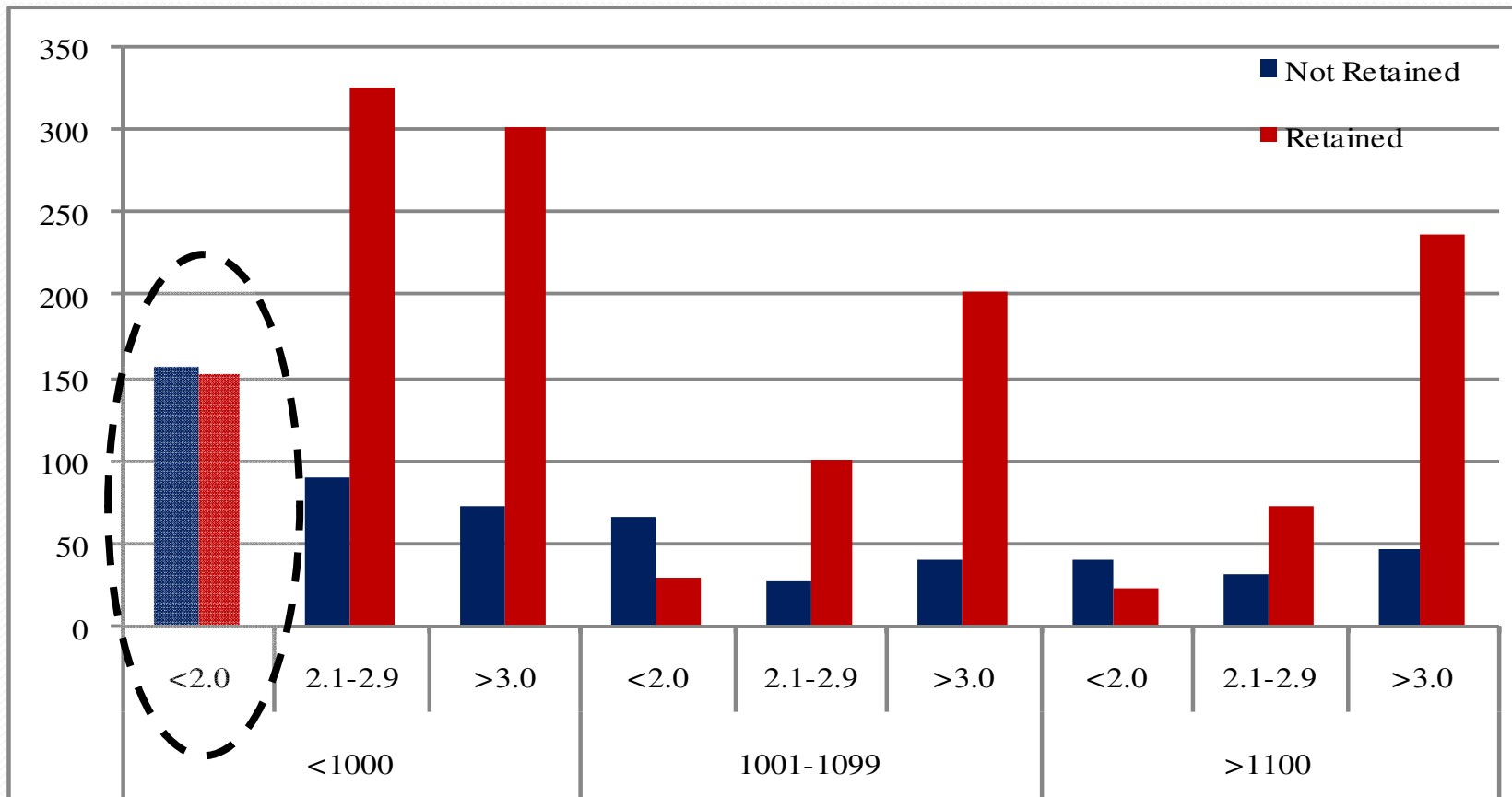
EXHIBIT 6: RETENTION RATES FOR ENTERING FRESHMAN COHORT BY FIRST-SEMESTER GPA FIRST TO THIRD YEAR, 2001 THROUGH 2005



Source: VSU Strategic Research & Analysis, 2007.

Retention Rates (cont.)

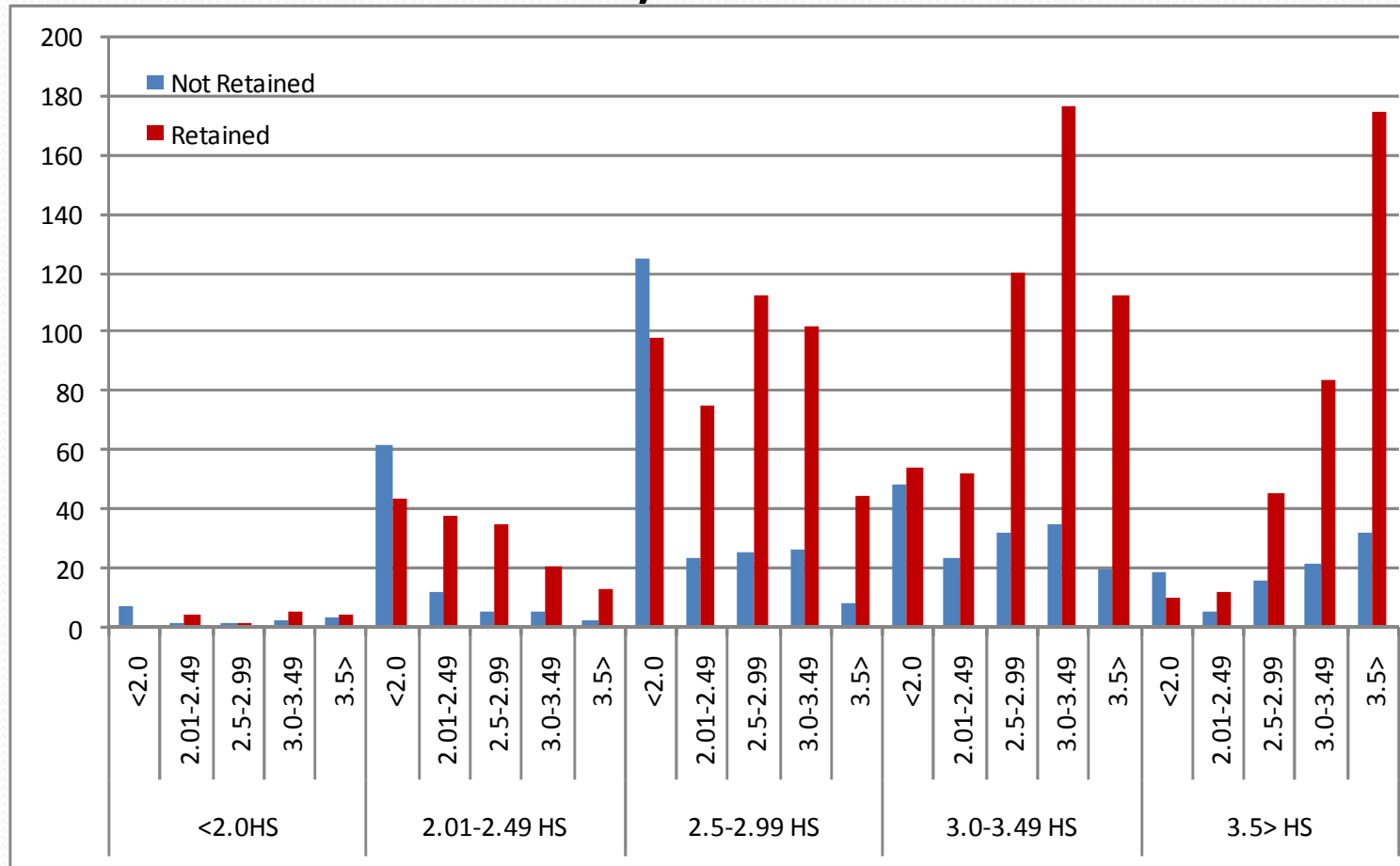
EXHIBIT 7: RETENTION RATES FOR ENTERING FRESHMAN IN THE 2006-2007 COHORT BY FIRST-SEMESTER GPA AND SAT SCORE, FIRST TO SECOND YEAR



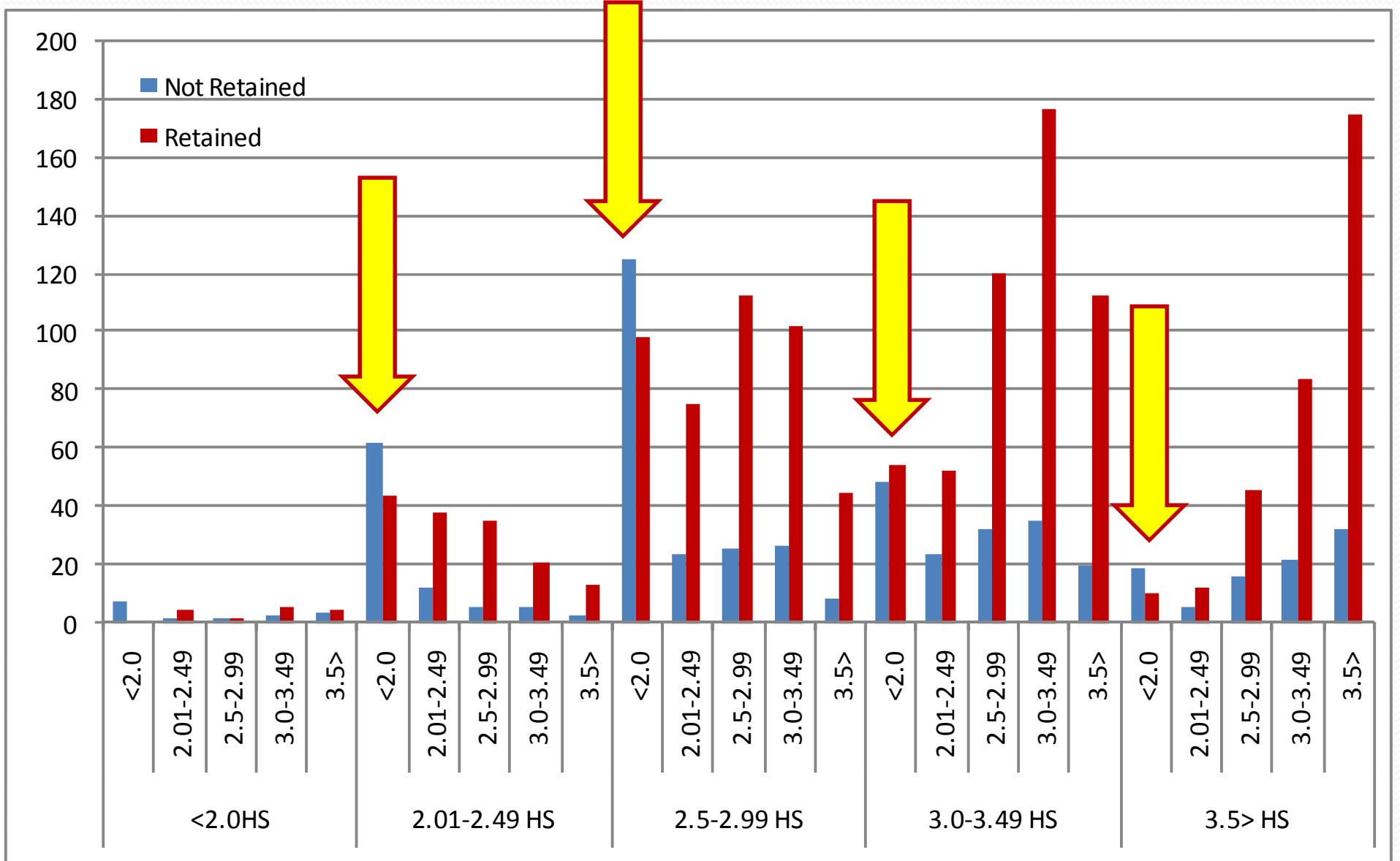
Source: VSU Strategic Research & Analysis, 2007.

Retention Rates (cont.)

EXHIBIT 8: RETENTION RATES FOR ENTERING FRESHMAN IN THE 2006-2007 COHORT BY FIRST-SEMESTER GPA AND HIGH SCHOOL GPA, FIRST TO SECOND YEAR



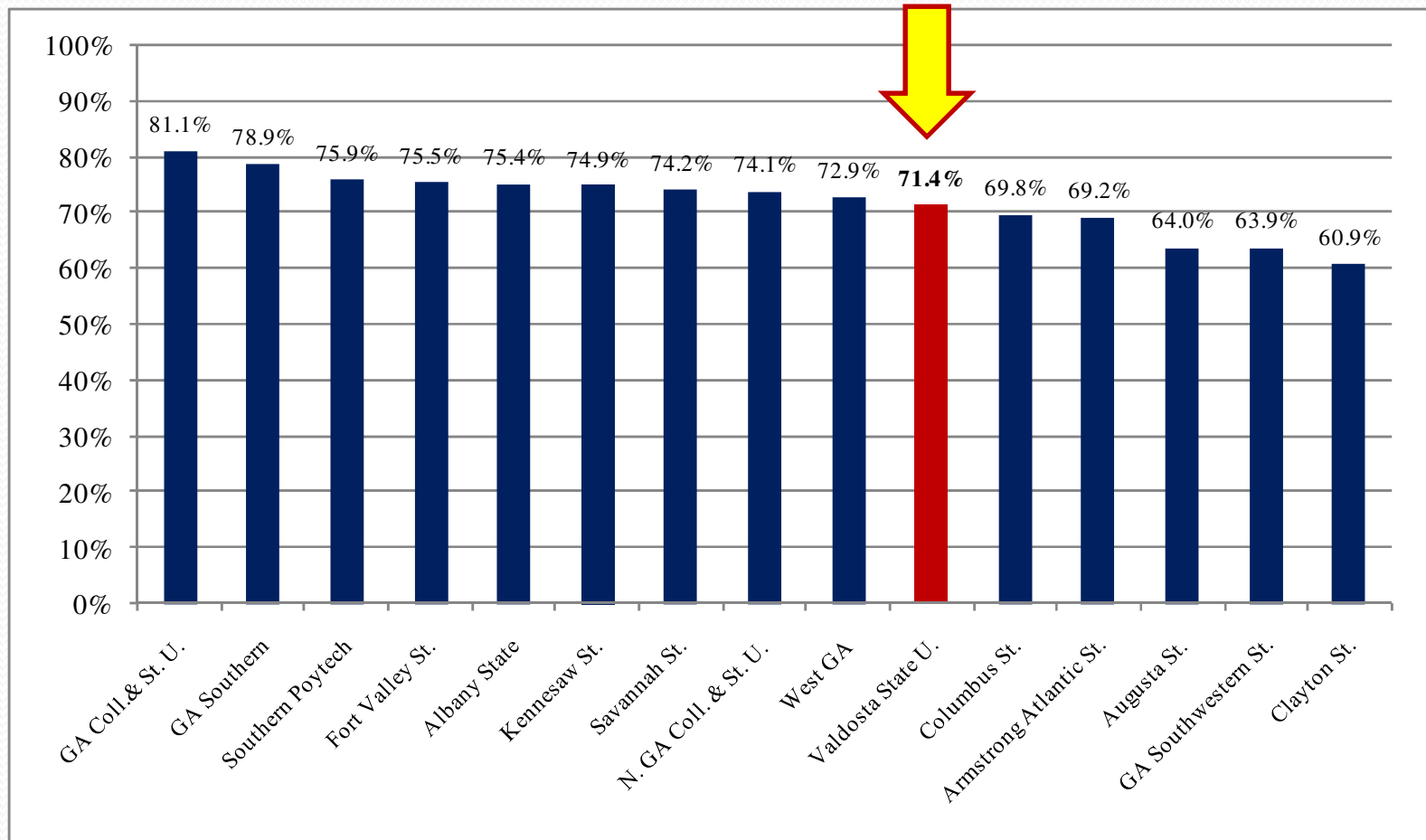
Source: VSU Strategic Research & Analysis, 2007.



Source: VSU Strategic Research & Analysis, 2007.

Retention Rates (cont.)

EXHIBIT 9: RETENTION RATES FOR ENTERING FRESHMAN IN THE 2006-2007 COHORT BY 15 INSTITUTIONS IN OUR SECTOR



Source: VSU Strategic Research & Analysis, 2007.



Retention Rates (cont.)

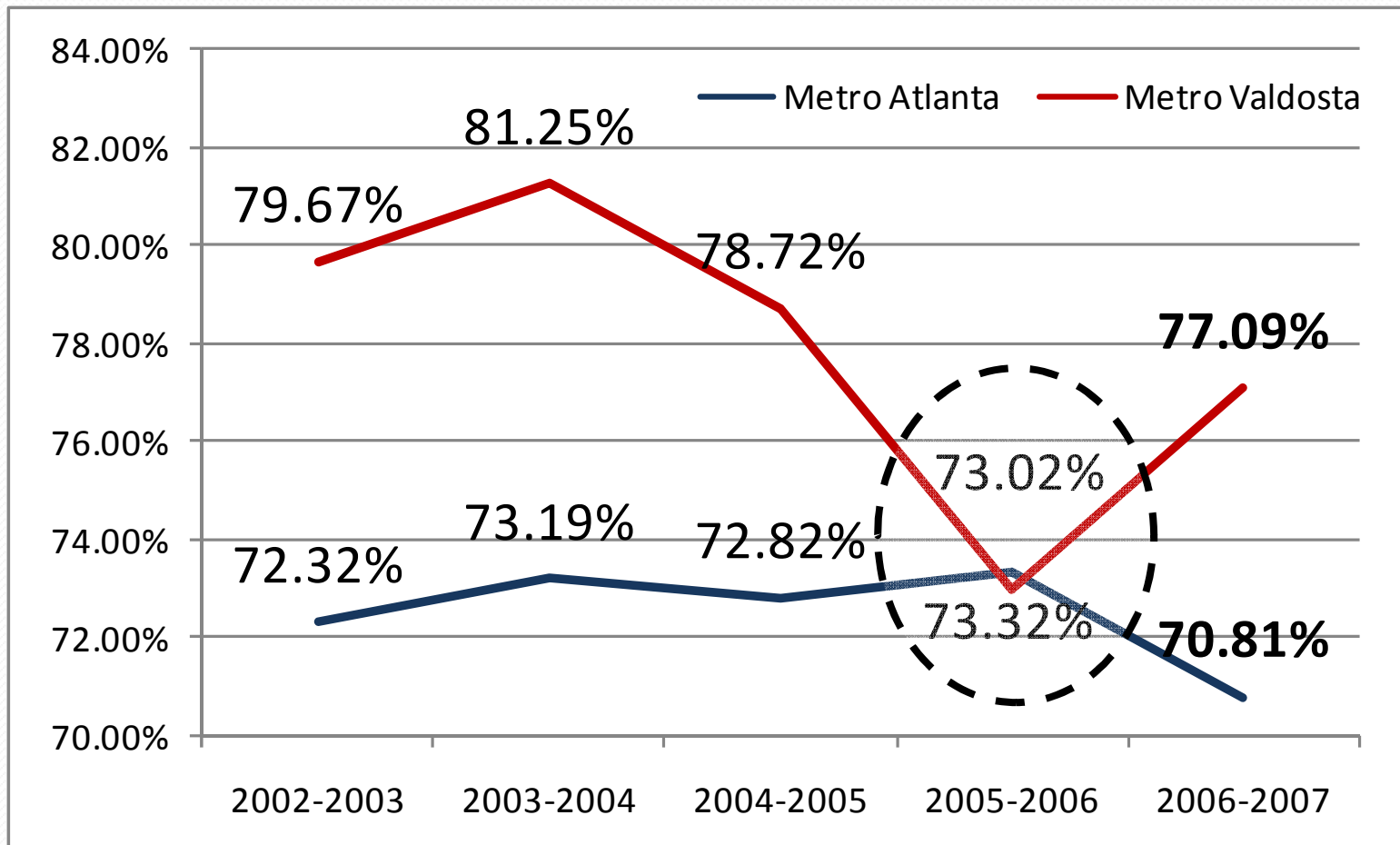
EXHIBIT 10: NUMBER OF USG INSTITUTIONS EXPERIENCING A DECLINE IN RETENTION RATES, FALL 2005 TO FALL 2006 COHORTS, BY INSTITUTION CATEGORY

	Institution	System
Research (3)	2	2
Regional (2)	1	0
State Universities (13)	6	7
State Colleges (6)	4	3
Two-Year (9)	5	3
TOTAL	18	15

Source: VSU Strategic Research & Analysis, 2007.

Retention Rates (cont.)

EXHIBIT 11: RETENTION RATES FOR ENTERING FRESHMAN COHORT, ATLANTA METRO AREA AND VALDOSTA METRO AREA



Source: VSU Strategic Research & Analysis, 2007.

Next Steps

PHASE I – RIGHT NOW

- 2,069 FTFT for Fall 2007
- Summary Fact Sheets
- Student Success Enhancement Team – Dr. Levy, Chair
 - Statistical analysis to identify students who likely need to develop a Student Success Plan (542 Students)
 - Professional Advisors contacting students
 - Continue focus interventions for students

PHASE II – SPRING 2008

- Need to further investigate patterns and means for intervention
- Detailed Analysis includes:
 - Situational Analysis
 - Focus Groups & Interviews
 - Survey of Current VSU Students
 - Collect Comparative Information
 - Develop Recommendations

Thank You

Questions & Comments



Want More Information?
Visit SRA's Website:
www.Valdosta.edu/sra

Dr. Kristina M. Cragg (kmcragg@valdosta.edu)
Assistant to the President for Strategic Research & Analysis