

Learning About Adult Learners: Results From the Data

Kristina M. Cragg, Ph.D.

Assistant to the President for Strategic Research & Analysis

kmcragg@valdosta.edu

Angela Henderson, M.A.

Senior Research Analyst

aselder@valdosta.edu

Valdosta State University – Strategic Research & Analysis

www.valdosta.edu/sra



Overview

- Summary of what we learned
- Demographics of adult learners at VSU
- ISAS/ALI Comparison Results from CAEL
- ISAS Institutional Comparison Data
- ALI Results from Noel-Levitz
- Questions

Summary

- On average, 842 adult learners are admitted to VSU each academic year.
- Over the past six years (2002-2008):
 - 58.7% were undergraduate students and 41.3% were graduate students.
 - 33.5% were males and 66.5% were females.
 - The average age was 34 years.



Summary

- In Fall 2008, just over 1,600 undergraduate adult learners were enrolled.
- Most common major for undergraduates:
 - Sociology, Anthropology, and Criminal Justice
 - Early Childhood Education
 - Nursing
 - Adult and Career Education.



Summary & Definition

- Of the total number of academic degrees VSU awarded during the past six years, 21.6% were awarded to adult learners.
- Nearly half of the adult learner population transfers in academic credits to VSU; the other half are first-time students.
- Definition: For this study, adult learners were age 25 and above at the time of their initial enrollment at VSU.



Enrollment Factors for Students

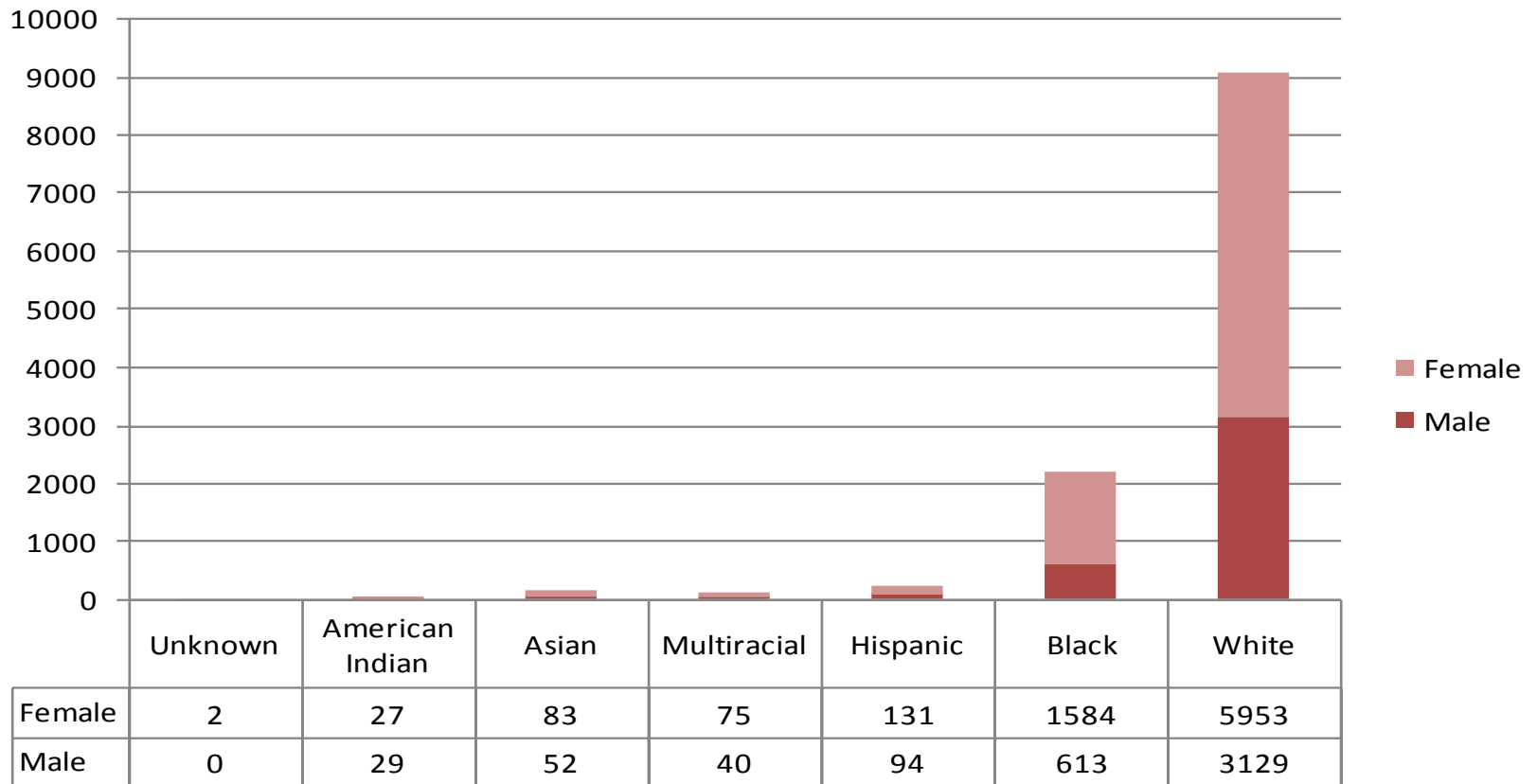
EXHIBIT 1: ENROLLMENT FACTORS FOR ADULT AND TRADITIONAL LEARNERS

Rank	Undergraduate Adult Students	Rank	Traditional Students
1	Academic reputation	1	Academic reputation
2 (tie)	Availability of evening/weekend courses	2	Financial aid
2 (tie)	Future employment opportunities	3	Cost
4	Campus location	4	Personalized attention prior to enrollment
5	Personalized attention prior to enrollment	5	Size of institution

Source: *Adult Learners in Higher Education*, 2007, p. 43.

Demographics of Adult Learners

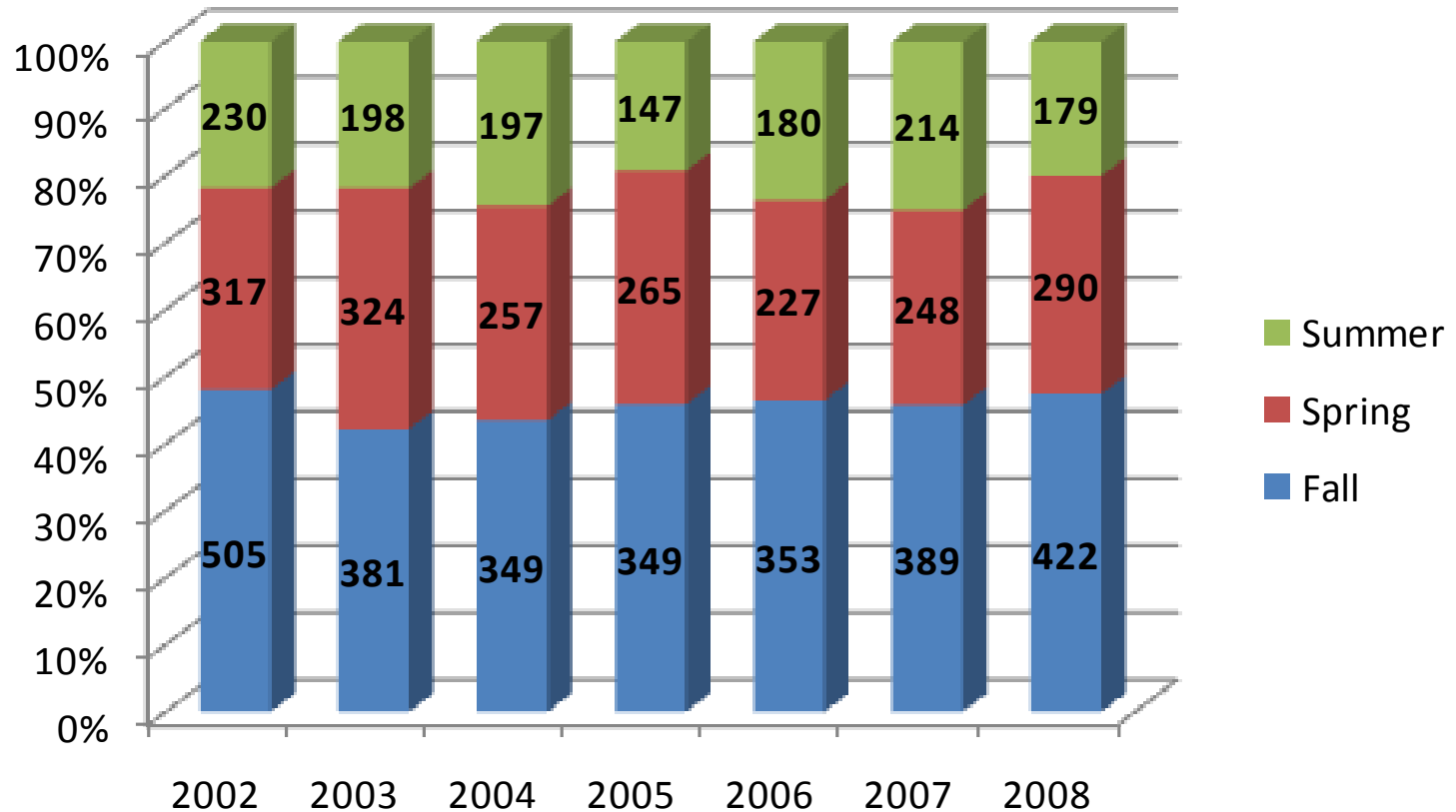
EXHIBIT 2: NUMBER OF ADULT LEARNERS BY ETHNICITY AND GENDER, FALL 2002 TO FALL 2008



Source: VSU SRA Office, March 2009.

Demographics of Adult Learners

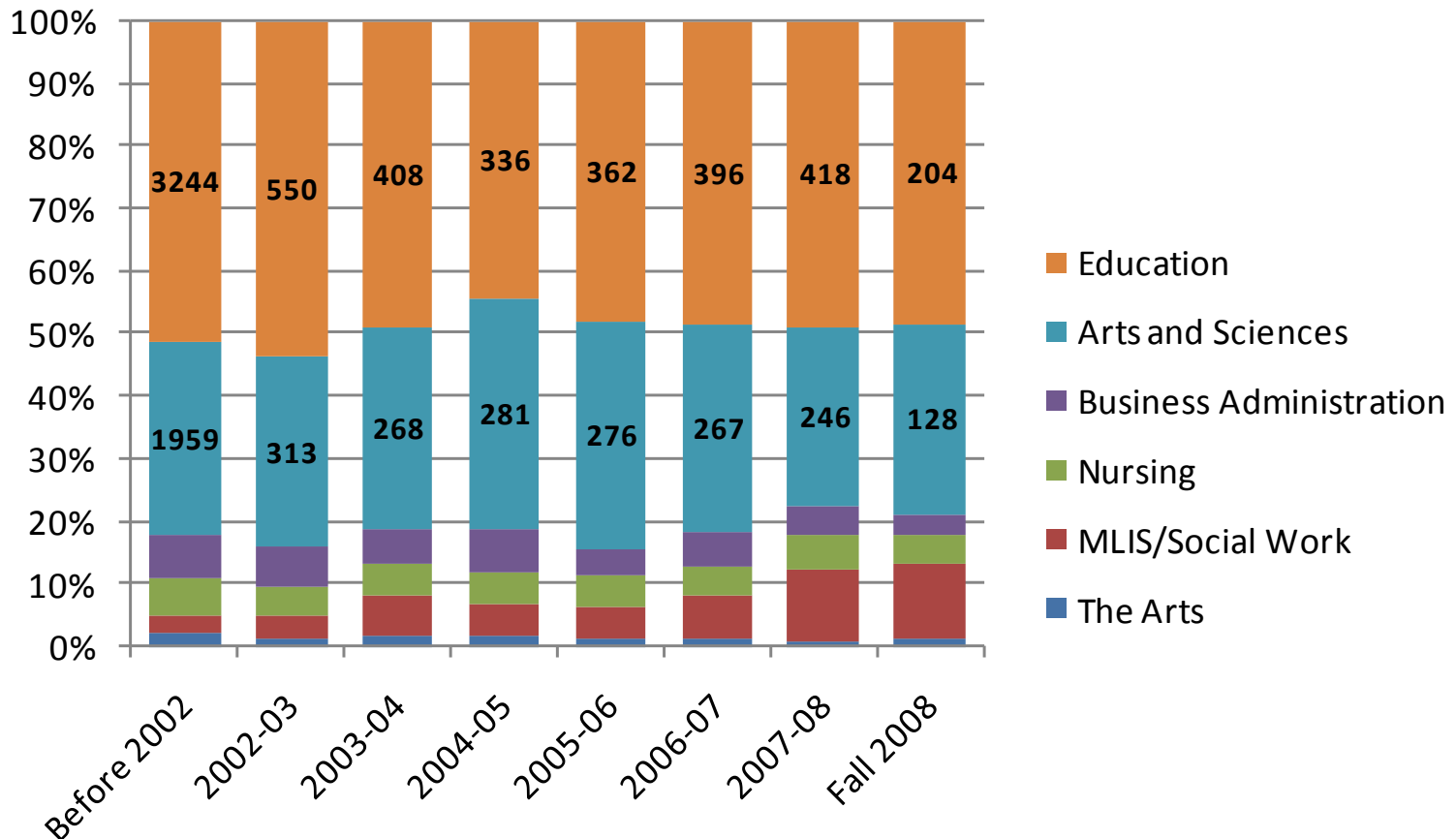
**EXHIBIT 3: NUMBER OF ADULT LEARNERS ADMITTED BY TERM,
FALL 2002 TO FALL 2008**



Source: VSU SRA Office, March 2009.

Demographics of Adult Learners

EXHIBIT 4: NUMBER OF ADULT LEARNERS ADMITTED BY COLLEGE BY ACADEMIC YEAR, FALL 2002 TO FALL 2008



Source: VSU SRA Office, March 2009.



Demographics of Adult Learners

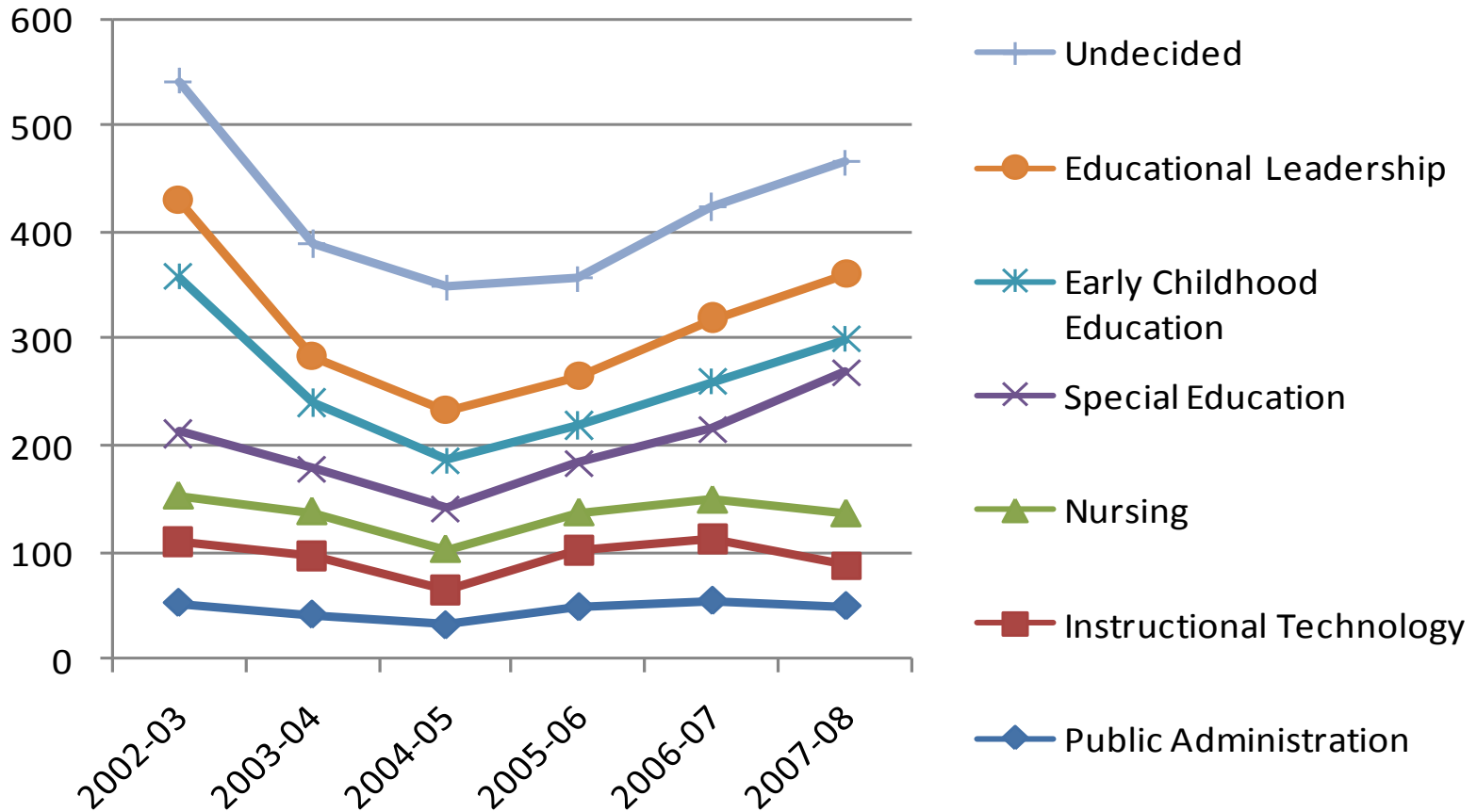
EXHIBIT 5: NUMBER OF ADULT LEARNERS BY MAJOR, FALL 2002 TO FALL 2008

Major	# Students	Major	# Students
Undecided	1,393	Library and Information Science	226
Educational Leadership	891	Accounting	212
Early Childhood Education	836	English	186
Special Education	772	Associate of Arts, Core Curriculum	185
Nursing	628	Reading Education	180
Instructional Technology	598	General Studies	175
Master of Public Administration	553	Business Administration	153
Secondary Education	425	Communication Disorders	150
Technical, Trade, and Industrial Education	376	Biology	126
Middle Grades Education	365	School Counseling	126
Master of Social Work	313	Technical Studies	105
Management	304	Health and Physical Education	88
Adult and Career Education	303	History	88
Criminal Justice	277	Business Education	82
Sociology and Anthropology	243	Marriage and Family Therapy	72
Psychology	229	Political Science	70

Source: VSU SRA Office, March 2009.

Demographics of Adult Learners

EXHIBIT 6: NUMBER OF ADULT LEARNERS ADMITTED BY MAJOR (TOP 7) BY ACADEMIC YEAR 2002-03 TO 2007-08



Demographics of Adult Learners

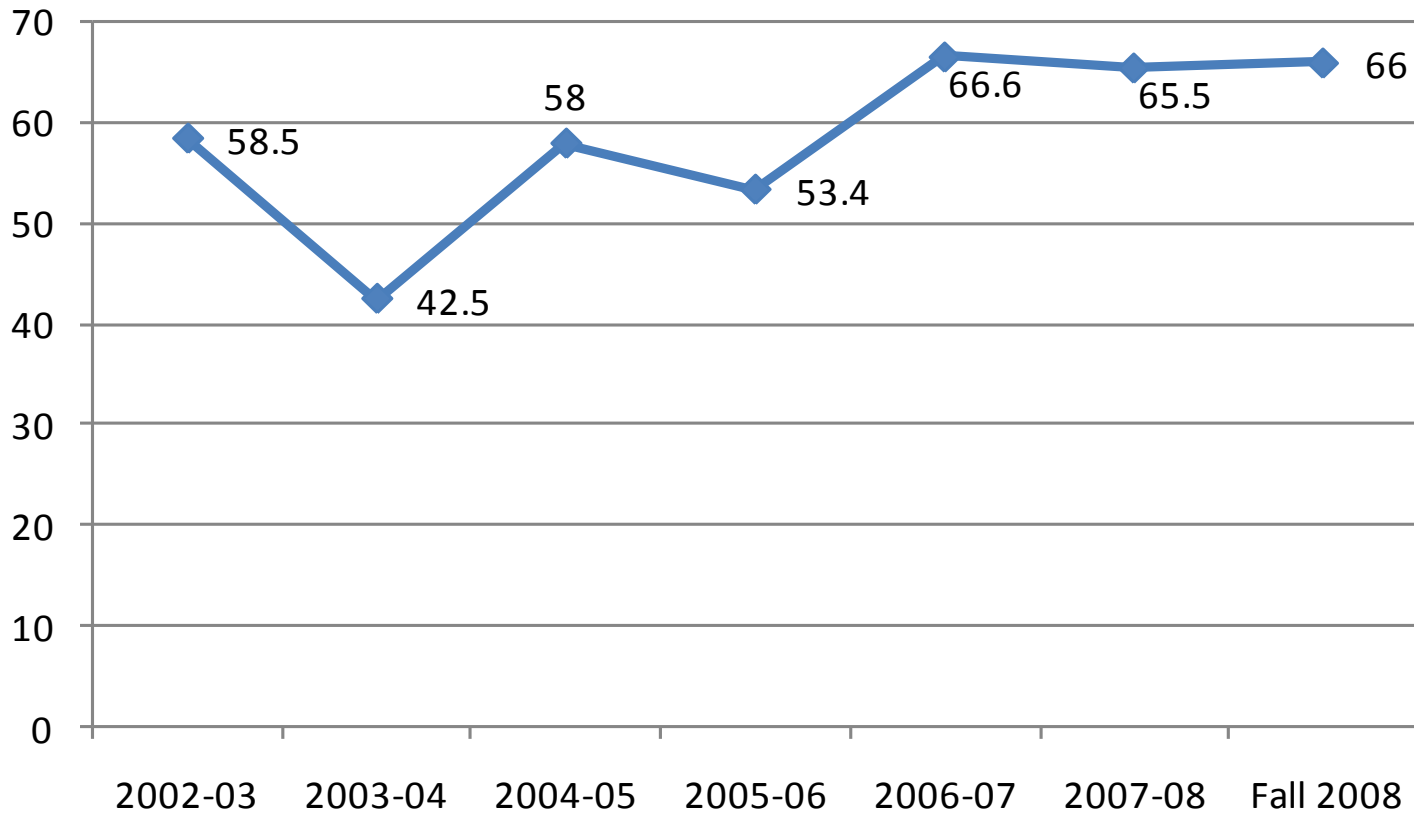
EXHIBIT 7: HOURS EARNED AND TRANSFERRED, FALL 2002 TO FALL 2008

Academics	Average
Students with Prior Degrees	Bachelor - 1875 Master - 867 Education Specialist - 80 Doctorate - 28
Cumulative Hours Attempted at VSU	37.20 (range 0-347, n=10,842)
Cumulative Hours Earned at VSU	33.41 (range 0-228, n=10,842)



Demographics of Adult Learners

EXHIBIT 8: AVERAGE HOURS TRANSFERRED, FALL 2002 TO FALL 2008



Demographics of Adult Learners

EXHIBIT 9: AVERAGE AGE OF ADULT LEARNERS BY MAJOR (TOP 20 BY AGE), FALL 2002 TO FALL 2008

Major	Average Age	Major	Average Age
Applied Mathematics	46	Library and Information Science	38
American Sign Language/Interpreting	40	History, General	37
Adult and Career Education	40	English	37
Curriculum and Instruction	39	Educational Leadership	36
Art	39	General Studies	36
French Language and Literature	39	School Psychology	36
Instructional Technology	39	Legal Assistance Studies	36
Technical, Trade, and Industrial Education	38	Special Education	36
Reading Education	38	Secondary Education	36
Cosmetology	38	Master of Social Work	36

Source: VSU SRA Office, March 2009.

Demographics of Adult Learners

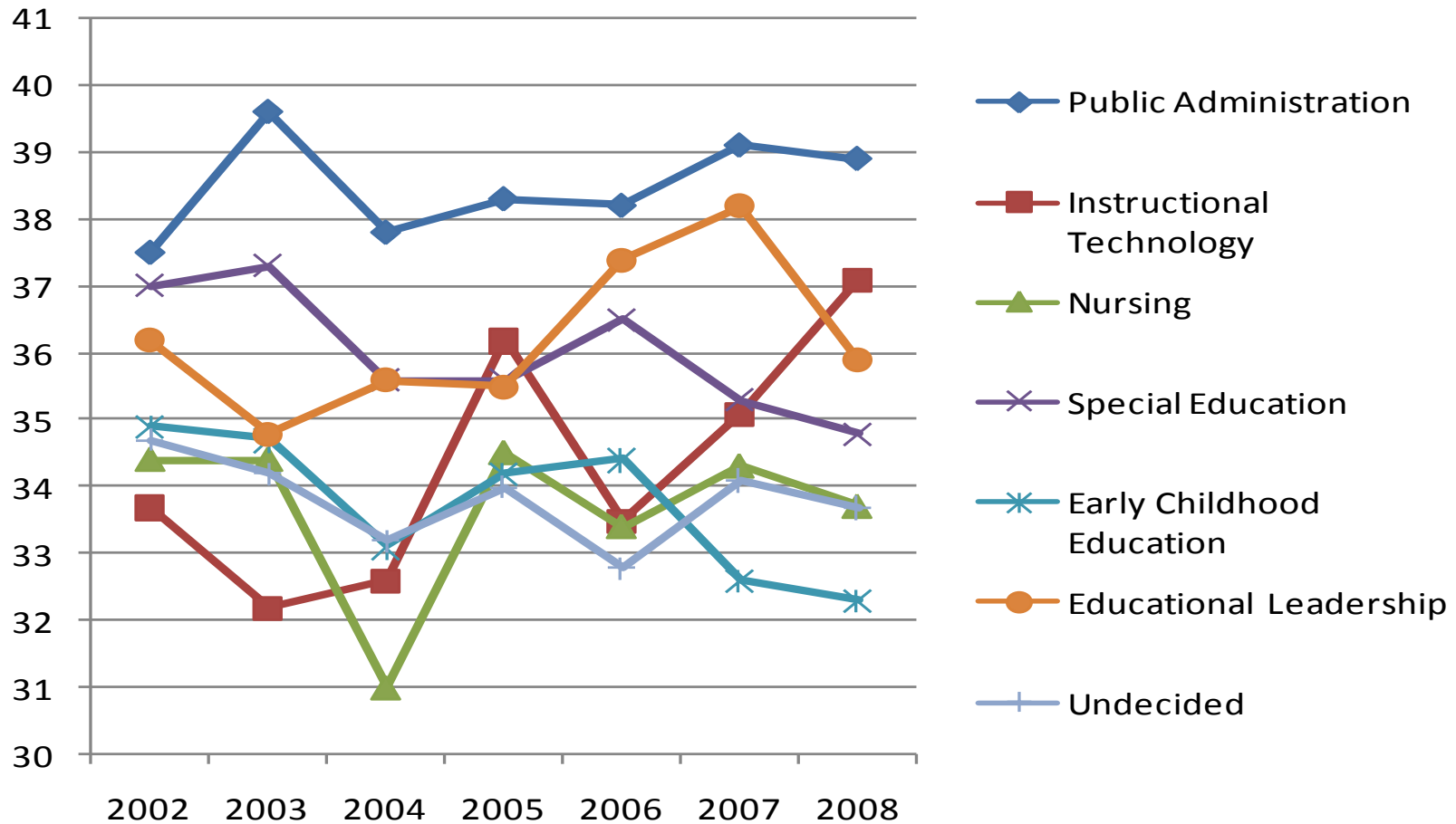
**EXHIBIT 10: AVERAGE AGE OF ADULT LEARNERS BY MAJOR
(BOTTOM 20 BY AGE), FALL 2002 TO FALL 2008**

Major	Average Age	Major	Average Age
Environmental Geography	31	Economics	30
Political Science	31	Radiologic Technology	30
Health and Physical Education	31	Marketing	30
Speech Communication	31	Philosophy	29
Biology	31	Music Performance	28
Communication Disorders	30	Mass Media	28
Mathematics	30	Physics	28
Chemistry	30	Pre-Engineering	28
Computer Science	30	Music	27
Athletic Training and Sports Medicine	30	Dance	26

Source: VSU SRA Office, March 2009.

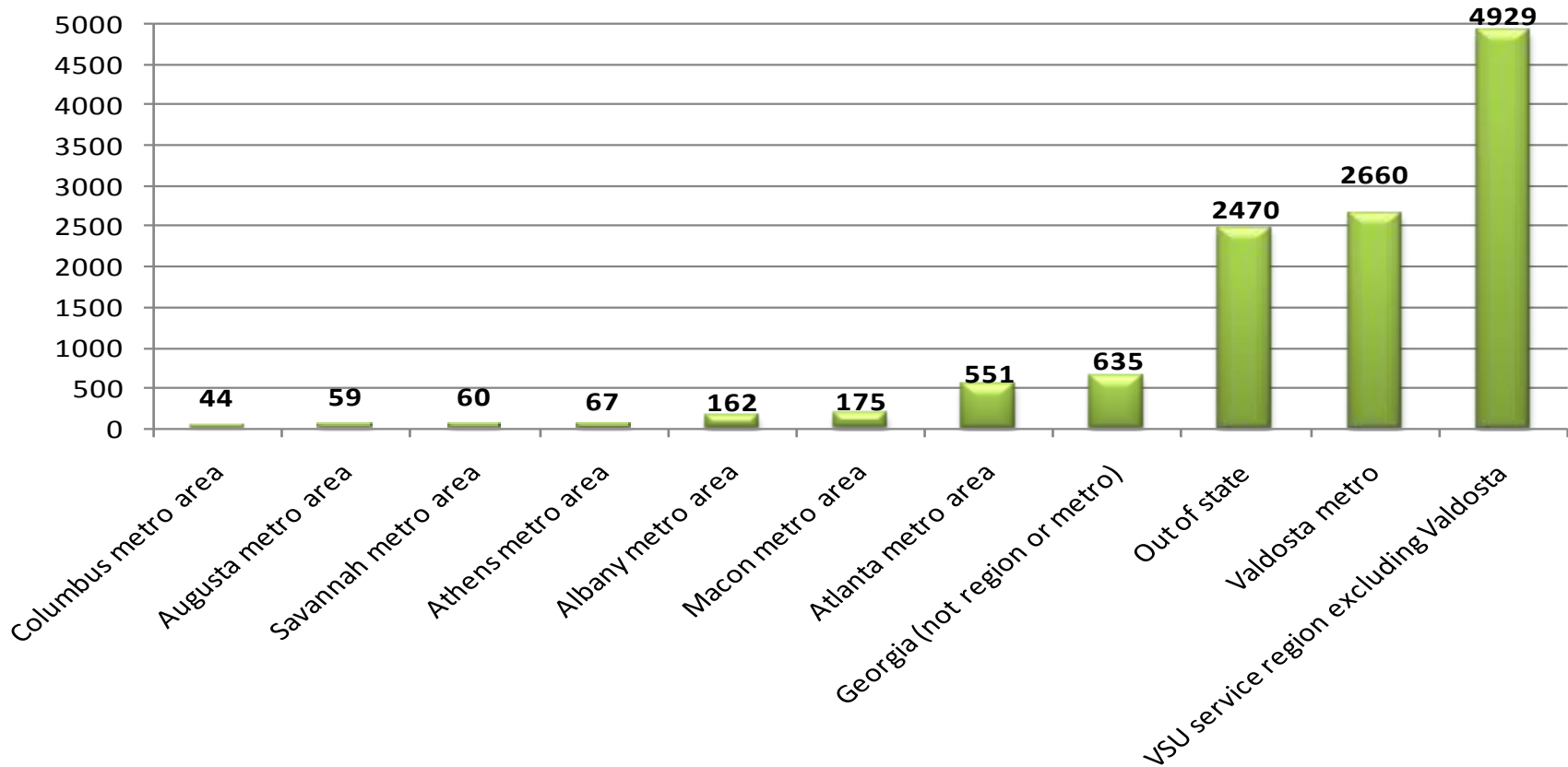
Demographics of Adult Learners

EXHIBIT 11: NUMBER OF ADULT LEARNERS ADMITTED BY AGE (TOP 7) BY YEAR



Demographics of Adult Learners

**EXHIBIT 12: ADULT LEARNERS BY GEORGIA METRO REGION,
FALL 2002 TO FALL 2008**



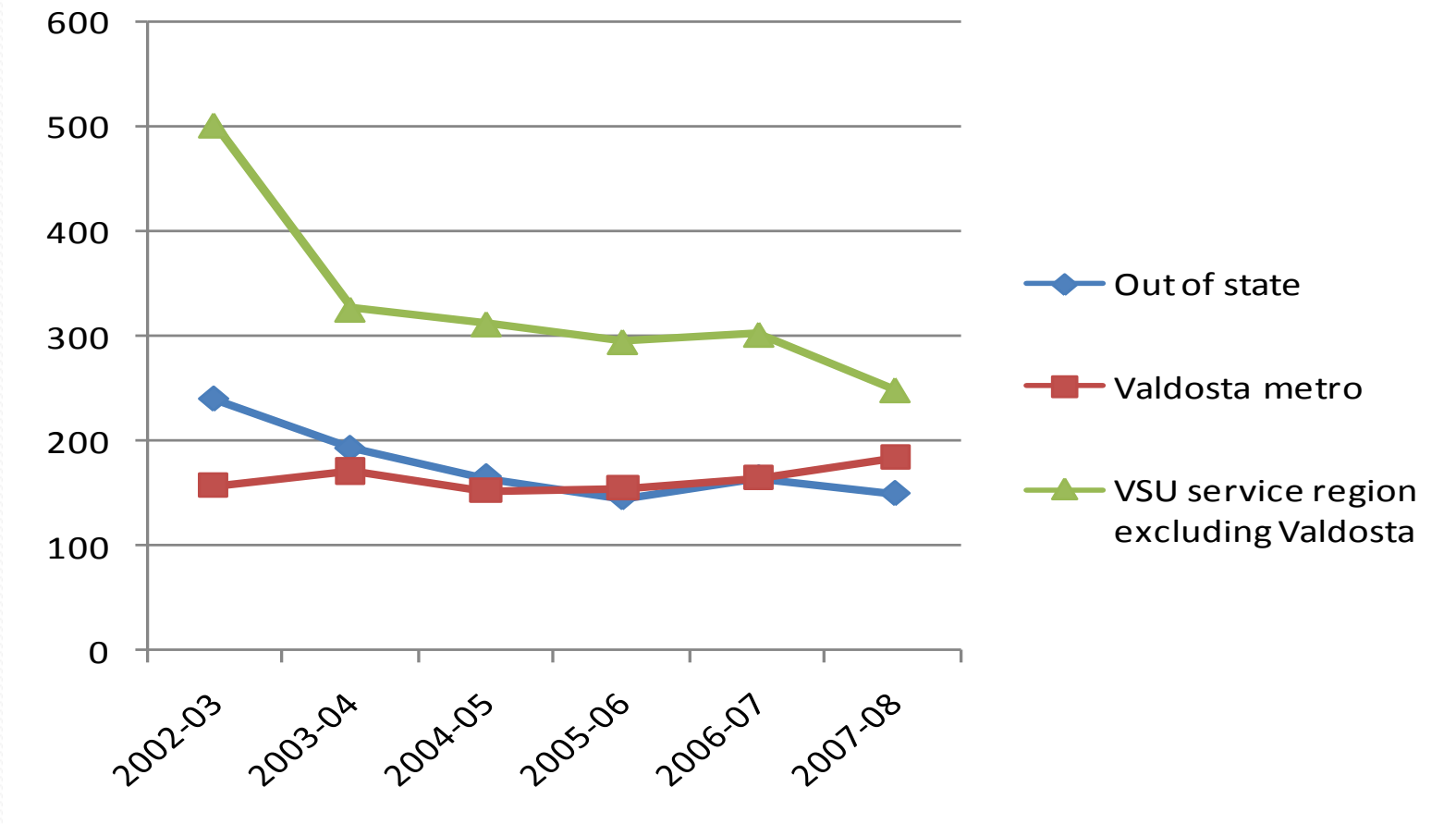
Demographics of Adult Learners

**EXHIBIT 13: ADULT LEARNERS BY ECONOMIC
DEVELOPMENT REGION,
FALL 2002 TO FALL 2008**

Economic Development Region	Percent
Southwest	44.80%
Southeast	21.10%
Out of State	20.90%
Central	4.60%
Metro Atlanta	4.60%
Northeast	1.30%
East Central	1.00%
West Central	1.00%
Northwest	0.70%

Demographics of Adult Learners

EXHIBIT 14: ADULT LEARNERS ADMITTED BY GEORGIA METRO REGION (TOP 3) BY YEAR



Demographics of Adult Learners

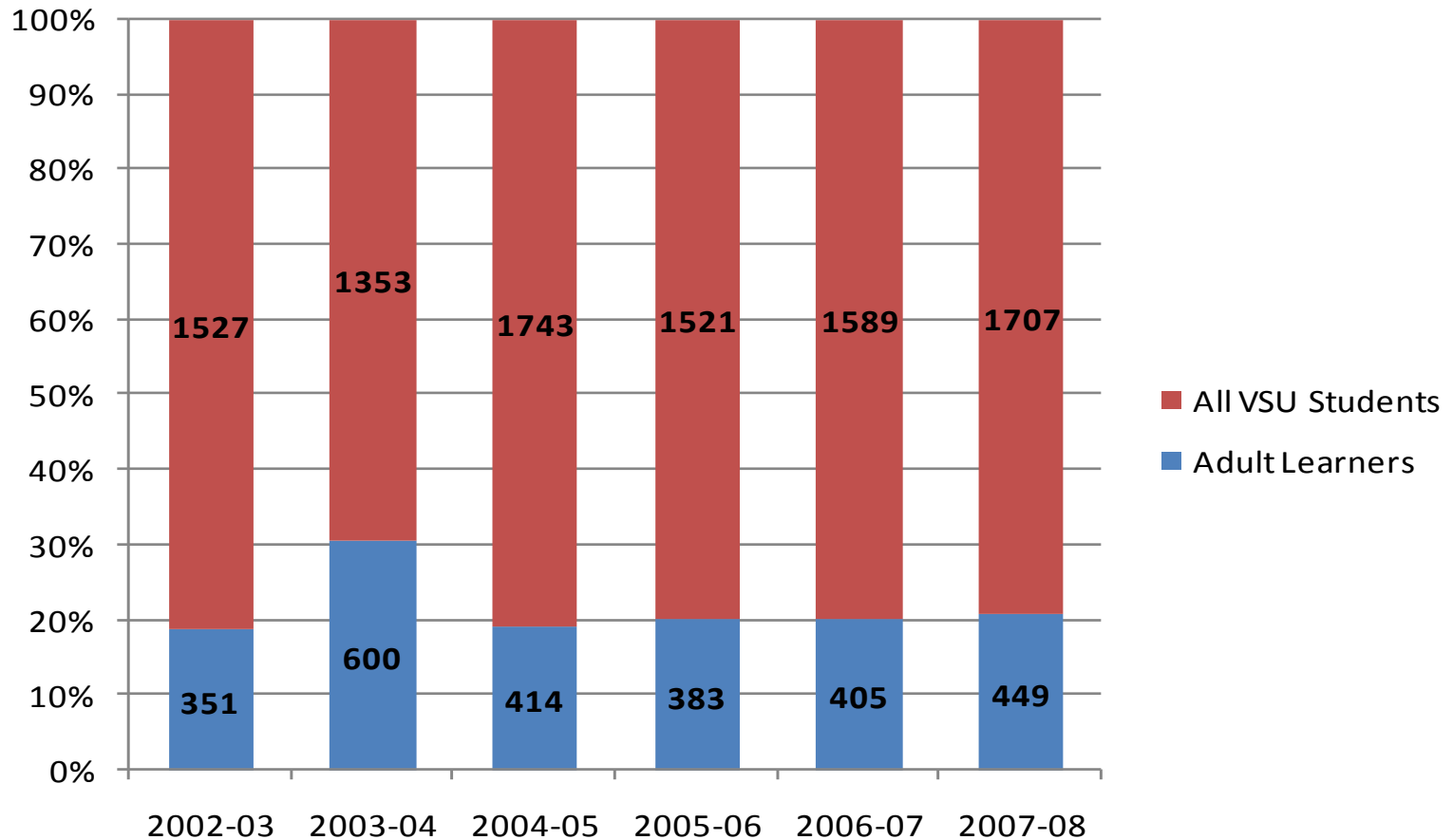
EXHIBIT 15: QUICK FACTS ABOUT ADULT LEARNERS BY YEAR OF MATRICULATION

Academics Facts	2002-03	2003-04	2004-05	2005-06	2006-07	2007-08	Fall 2008
Average Number of Terms Enrolled at VSU	5.1	5.2	5.1	5.1	4.9	3.5	1.9
Average SAT Math Score	505	507	511	469	503	520	507
Average SAT Verbal Score	491	497	554	476	528	536	519
Average GRE Analytical Score	511	540	507	547	520	530	530
Average GRE Quantitative Score	480	501	496	491	479	490	504
Average GRE Verbal Score	473	476	469	495	463	475	503
Average VSU GPA	2.98	3.03	2.97	3.03	3.03	2.99	3.68
Students in On-Campus Housing	14	13	11	12	19	19	3
Students Receiving Financial Aid	53	48	49	51	53	50	16



Demographics of Adult Learners

EXHIBIT 16: DEGREES CONFERRED BY ACADEMIC YEAR



Source: VSU SRA Office, March 2009.

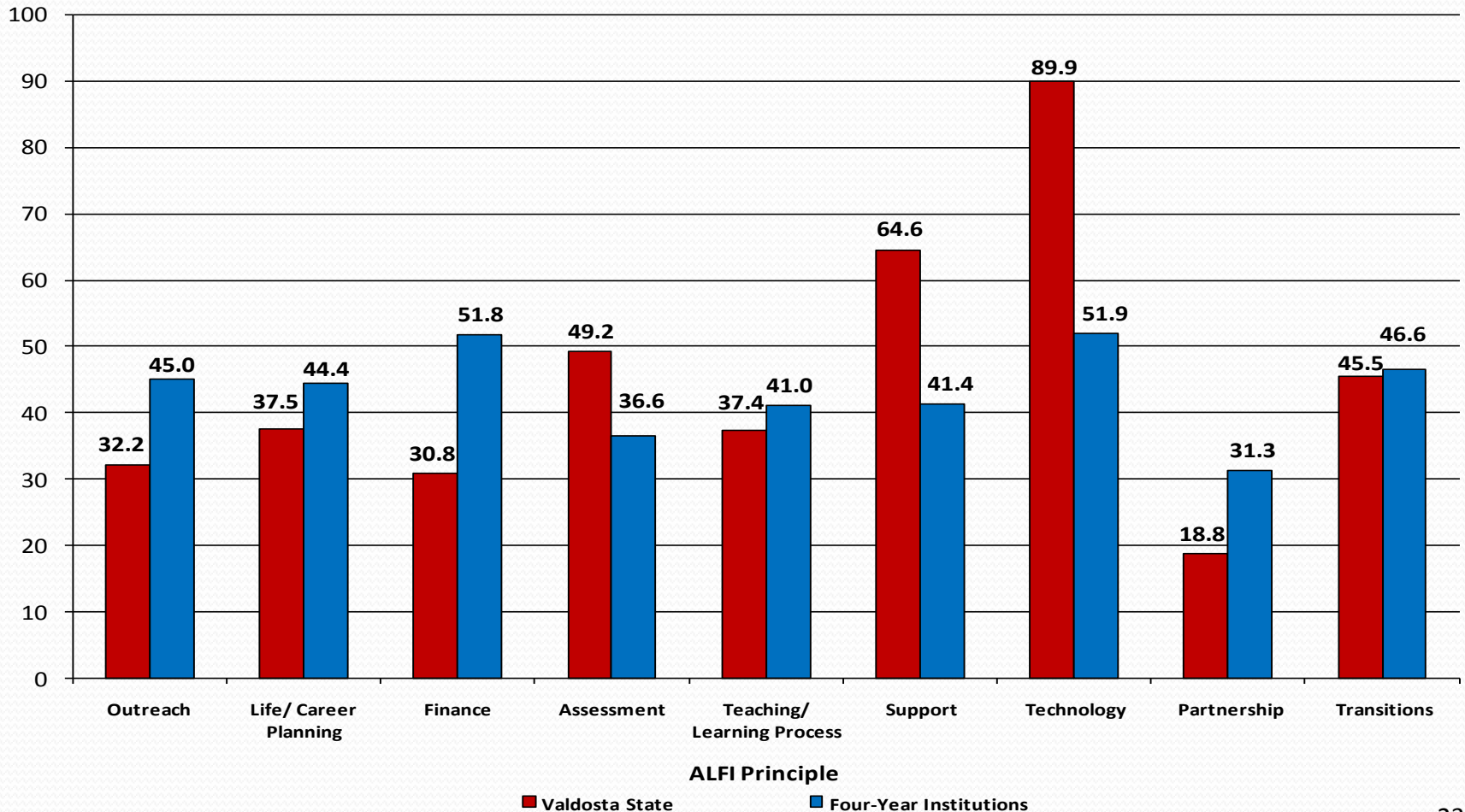


ISAS and ALI Results



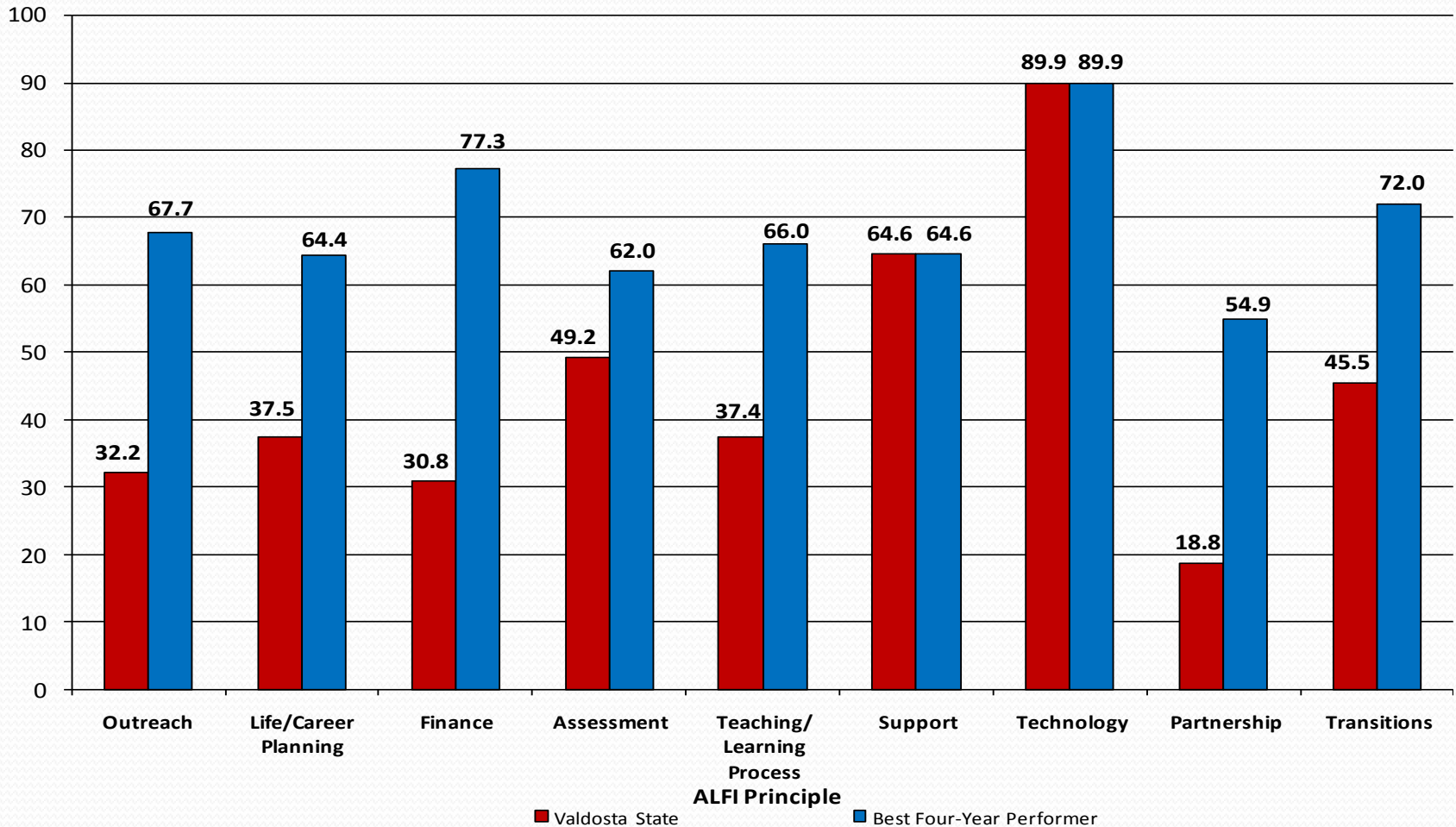
ISAS Results Mean Performance

EXHIBIT 17: ISAS RESULTS: VSU VS MEAN PERFORMANCE OF ALL FOUR-YEAR INSTITUTIONS



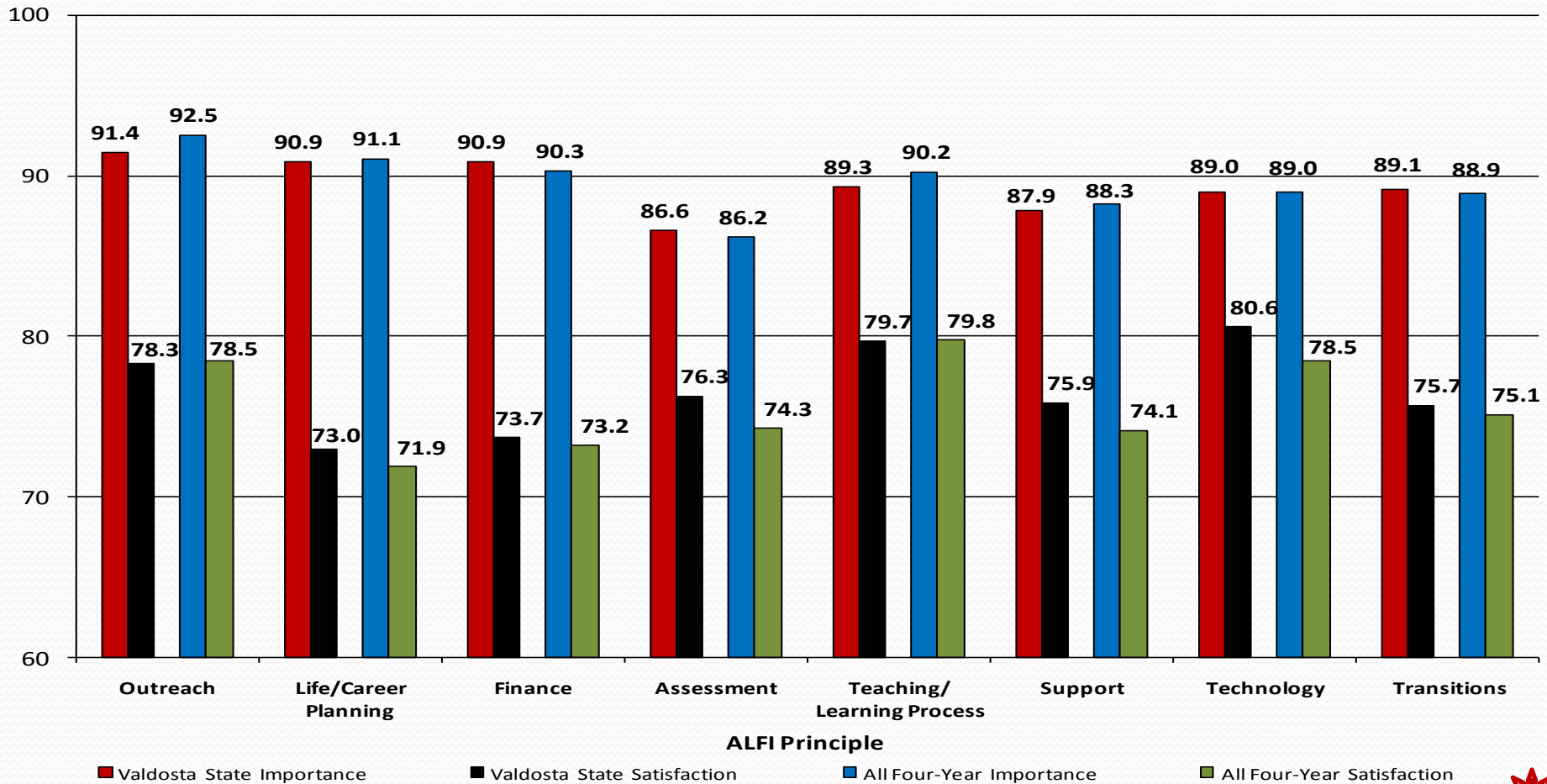
ISAS Results

EXHIBIT 18: ISAS RESULTS: VSU VS BEST FOUR-YEAR PERFORMER IN EACH CATEGORY



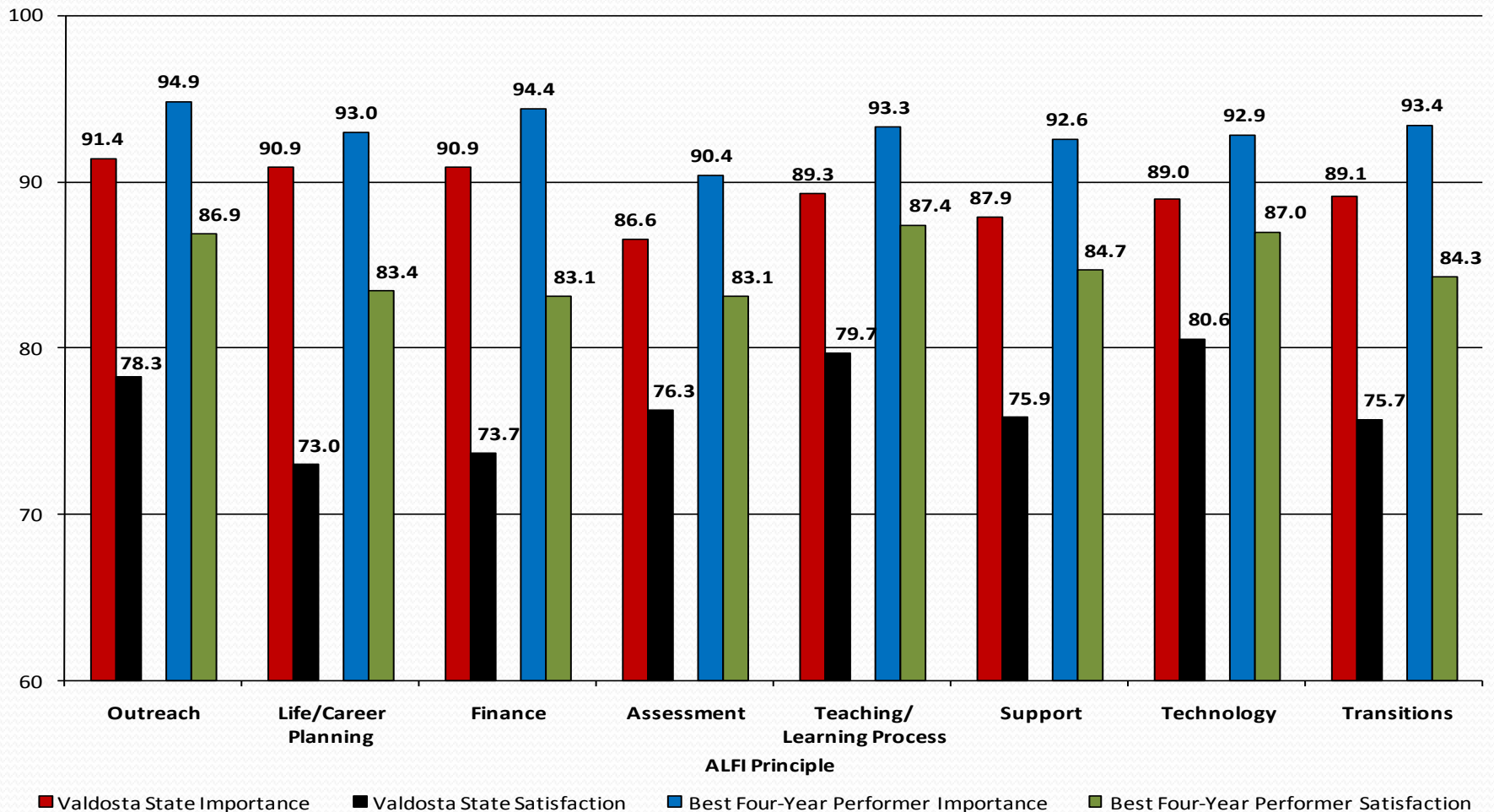
ALI Results

EXHIBIT 19: ISAS RESULTS: VSU VS MEAN PERFORMANCE OF ALL FOUR-YEAR INSTITUTIONS



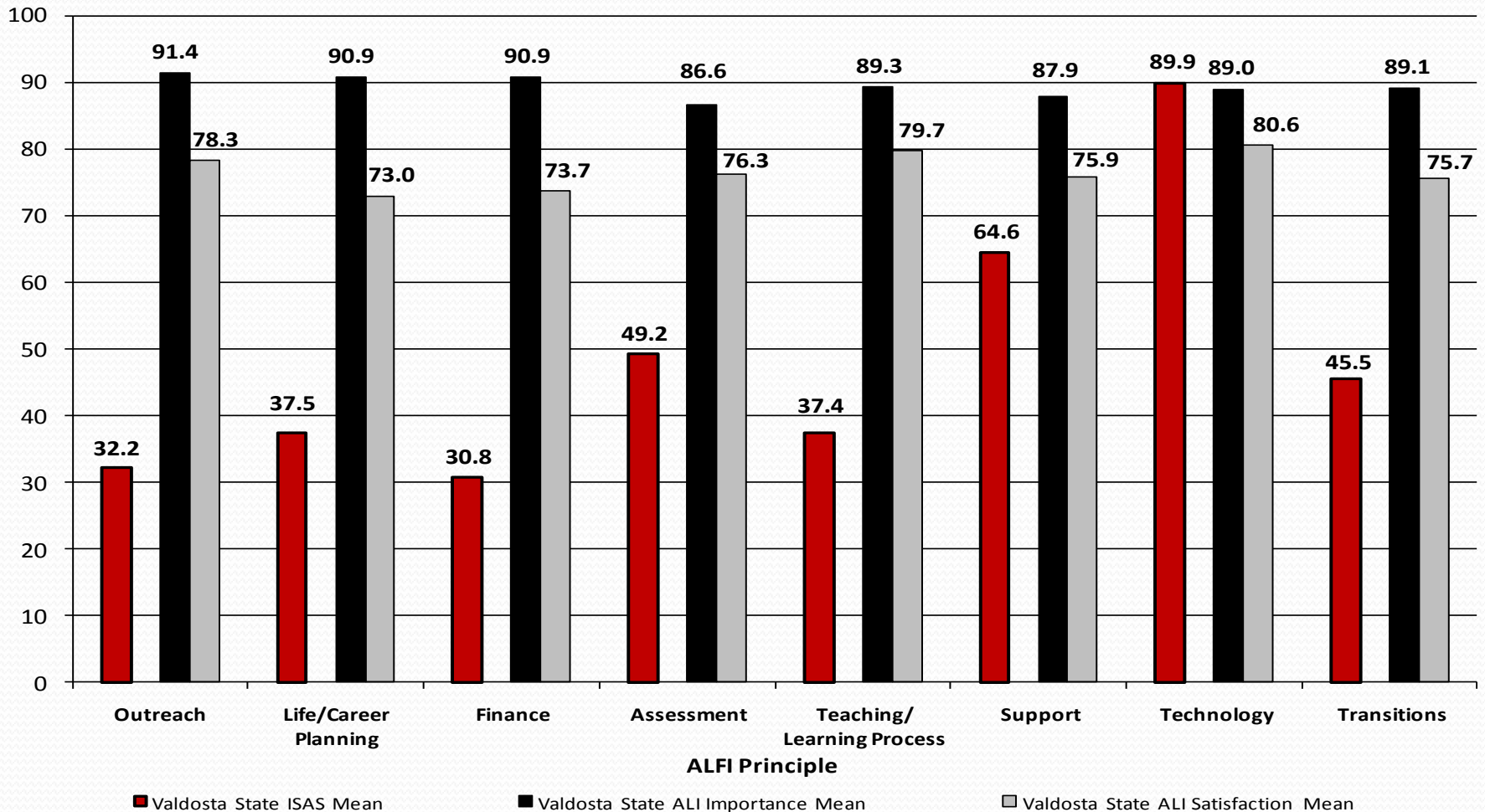
ALI Results

EXHIBIT 20: ISAS RESULTS: VSU VS BEST FOUR-YEAR PERFORMER IN EACH CATEGORY



ISAS and ALI Results

EXHIBIT 21: COMBINED RESULTS ISAS & ALI FOR VSU



ISAS Comparison Results

		Community College Responses	University Responses	All Responses
Q2-What % of undergraduate composed of adult learners?	Less than 10%	0.00%	25.00%	7.50%
	11% to 25%	4.30%	30.00%	11.90%
	26% to 50%	63.80%	20.00%	50.70%
	51% to 75%	25.50%	0.00%	17.90%
	More than 75%	6.40%	25.00%	11.90%

		Community College Responses	University Responses	All Responses
Q3-What % of your students attend all or most of their classes on-line	Less than 10%	55.30%	80.00%	62.70%
	11% to 25%	31.90%	10.00%	25.40%
	26% to 50%	12.80%	0.00%	9.00%
	More than 75%	0.00%	10.00%	3.00%

Source: CAEL, 2009

ISAS Comparison Results

		Community College Responses	University Responses	All Responses
Q9-Which best describes how adult-focused modes of instruction are delivered?	Concentrated in a special school or unit	10.60%	30.00%	16.40%
	Characteristics of the entire institution	53.20%	30.00%	46.30%
	No Practices especially designed to serve adult learners pre	21.30%	10.00%	17.90%
	Other	14.90%	30.00%	19.40%

Source: CAEL, 2009



ISAS Comparison Results

		Community College Responses	University Responses	All Responses
Q13-Extent	Not at all	2.10%	5.00%	3.00%
recruitment materials	Not very much	23.40%	40.00%	28.40%
emphasize specific	Somewhat	44.70%	20.00%	37.30%
services for adult	A great deal	25.50%	25.00%	25.40%
learners	Almost always	4.30%	10.00%	6.00%

Source: CAEL, 2009



ISAS Comparison Results

		Community College Responses	University Responses	All Responses
Q19e-Entering Students - Individual contact to assess and overcome specific barriers to learning	All	12.80%	15.00%	13.40%
	Most	27.70%	20.00%	25.40%
	Some	53.20%	50.00%	52.20%
	Almost none	2.10%	15.00%	6.00%
	No response	4.30%	0.00%	3.00%

		Community College Responses	University Responses	All Responses
Q19f-Entering Students - Individual contact to identify specific goals for transfer	All	14.90%	0.00%	10.40%
	Most	31.90%	0.00%	22.40%
	Some	51.10%	75.00%	58.20%
	Almost none	0.00%	20.00%	6.00%
	Not available	2.10%	5.00%	3.00%

Source: CAEL, 2009

ISAS Comparison Results

		Community College Responses	University Responses	All Responses
Q19g-Entering Students - A single advisor or point of contact from whom to seek help	All	34.00%	55.00%	40.30%
	Most	17.00%	30.00%	20.90%
	Some	40.40%	15.00%	32.80%
	Almost none	8.50%	0.00%	6.00%

		Community College Responses	University Responses	All Responses
Q19k-Entering Students - A study contract or individualized plan of study	All	6.40%	20.00%	10.40%
	Most	14.90%	35.00%	20.90%
	Some	38.30%	30.00%	35.80%
	Almost none	34.00%	10.00%	26.90%
	Not available	6.40%	0.00%	4.50%
	No response	0.00%	5.00%	1.50%

Source: CAEL, 2009

ISAS Comparison Results

		Community College Responses	University Responses	All Responses
Q25a-Instructional delivery - Face-to-face classes daytime hours	Significant mode	97.90%	75.00%	91.00%
	Available mode	2.10%	25.00%	9.00%

		Community College Responses	University Responses	All Responses
Q25b-Instructional delivery - Face-to-face classes evening hours	Significant mode	95.70%	60.00%	85.10%
	Available mode	4.30%	40.00%	14.90%

Source: CAEL, 2009



ISAS Comparison Results

		Community College Responses	University Responses	All Responses
Q25c-Instructional delivery - Face-to-face classes before working hours	Significant mode	4.30%	0.00%	3.00%
	Available mode	48.90%	20.00%	40.30%
	Not available	44.70%	80.00%	55.20%
	No response	2.10%	0.00%	1.50%

		Community College Responses	University Responses	All Responses
Q25d-Instructional delivery - Face-to-face classes weekend	Significant mode	17.00%	15.00%	16.40%
	Available mode	72.30%	60.00%	68.70%
	Not available	10.60%	25.00%	14.90%

Source: CAEL, 2009



ISAS Comparison Results

		Community College Responses	University Responses	All Responses
Q25e-Instructional delivery - Face-to-face workplace at any time	Significant mode	4.30%	0.00%	3.00%
	Available mode	55.30%	50.00%	53.70%
	Not available	38.30%	50.00%	41.80%
	No response	2.10%	0.00%	1.50%

		Community College Responses	University Responses	All Responses
Q25f-Instructional delivery - Recorded one-way video or audio delivery	Significant mode	2.10%	0.00%	1.50%
	Available mode	63.80%	50.00%	59.70%
	Not available	34.00%	50.00%	38.80%

Source: CAEL, 2009

ISAS Comparison Results

		Community College Responses	University Responses	All Responses
Q25g-Instructional delivery - Interactive two-way video or audio delivery	Significant mode	12.80%	15.00%	13.40%
	Available mode	48.90%	60.00%	52.20%
	Not available	36.20%	25.00%	32.80%
	No response	2.10%	0.00%	1.50%

		Community College Responses	University Responses	All Responses
Q25h-Instructional delivery - Asynchronous print-based (correspondence)	Significant mode	4.30%	0.00%	3.00%
	Available mode	14.90%	40.00%	22.40%
	Not available	78.70%	60.00%	73.10%
	No response	2.10%	0.00%	1.50%

Source: CAEL, 2009

ISAS Comparison Results

		Community College Responses	University Responses	All Responses
Q25i-Instructional delivery - Synchronous (live) computer-based delivery	Significant mode	14.90%	20.00%	16.40%
	Available mode	40.40%	40.00%	40.30%
	Not available	42.60%	40.00%	41.80%
	No response	2.10%	0.00%	1.50%

		Community College Responses	University Responses	All Responses
Q25j-Instructional delivery - Asynchronous computer-based delivery	Significant mode	51.10%	65.00%	55.20%
	Available mode	42.60%	30.00%	38.80%
	Not available	4.30%	5.00%	4.50%
	No response	2.10%	0.00%	1.50%

Source: CAEL, 2009

ALI Results

- Results materials
 - HTML results file
 - Raw data file (tab delimited)
 - Instructions for using raw data file
 - File format description
 - SPSS syntax file



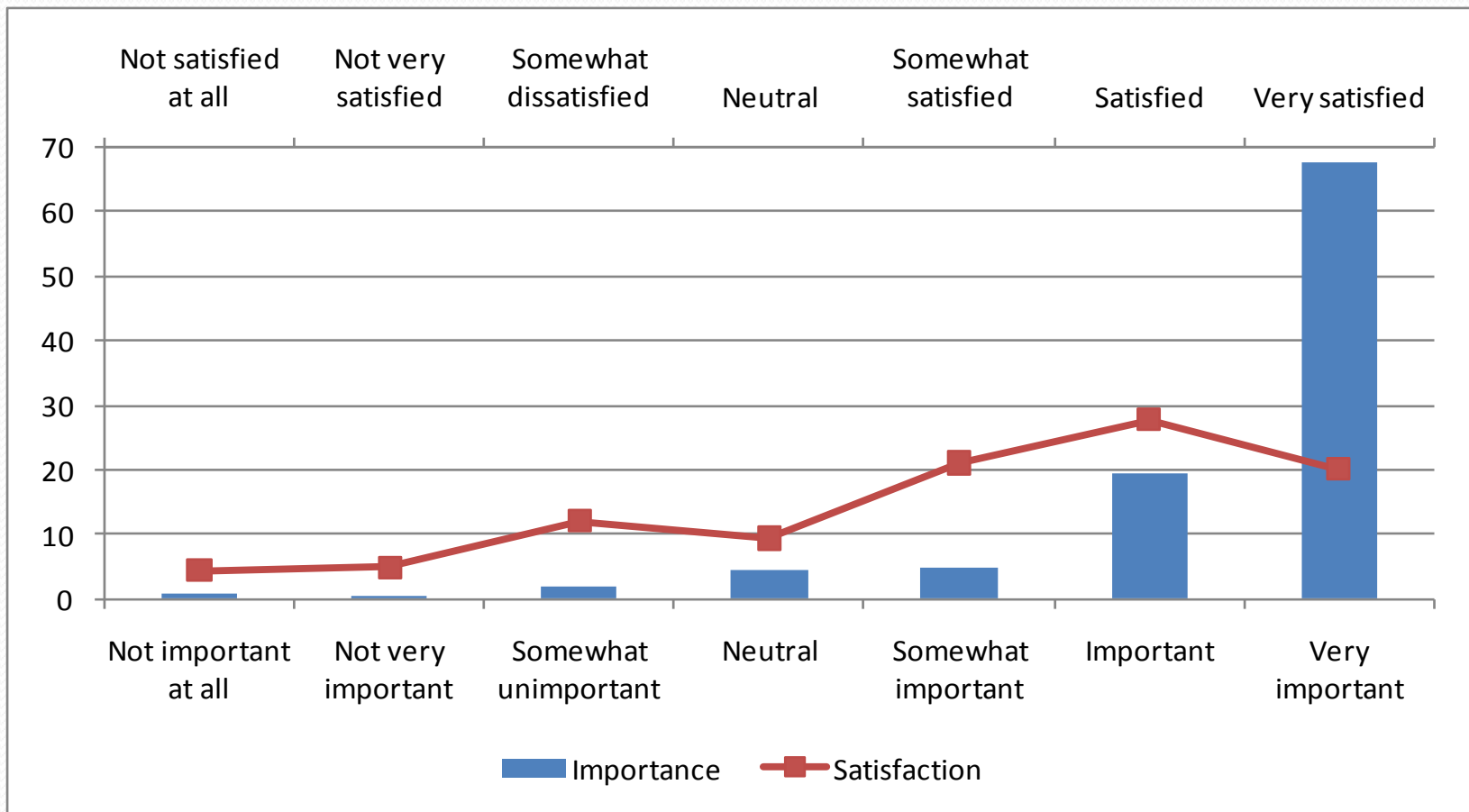
ALI Results

- 1,329 invitations sent out on March 11, 2009
- 230 respondents completed the survey by the close date of April 7, 2009
- 17% response rate



ALI Results

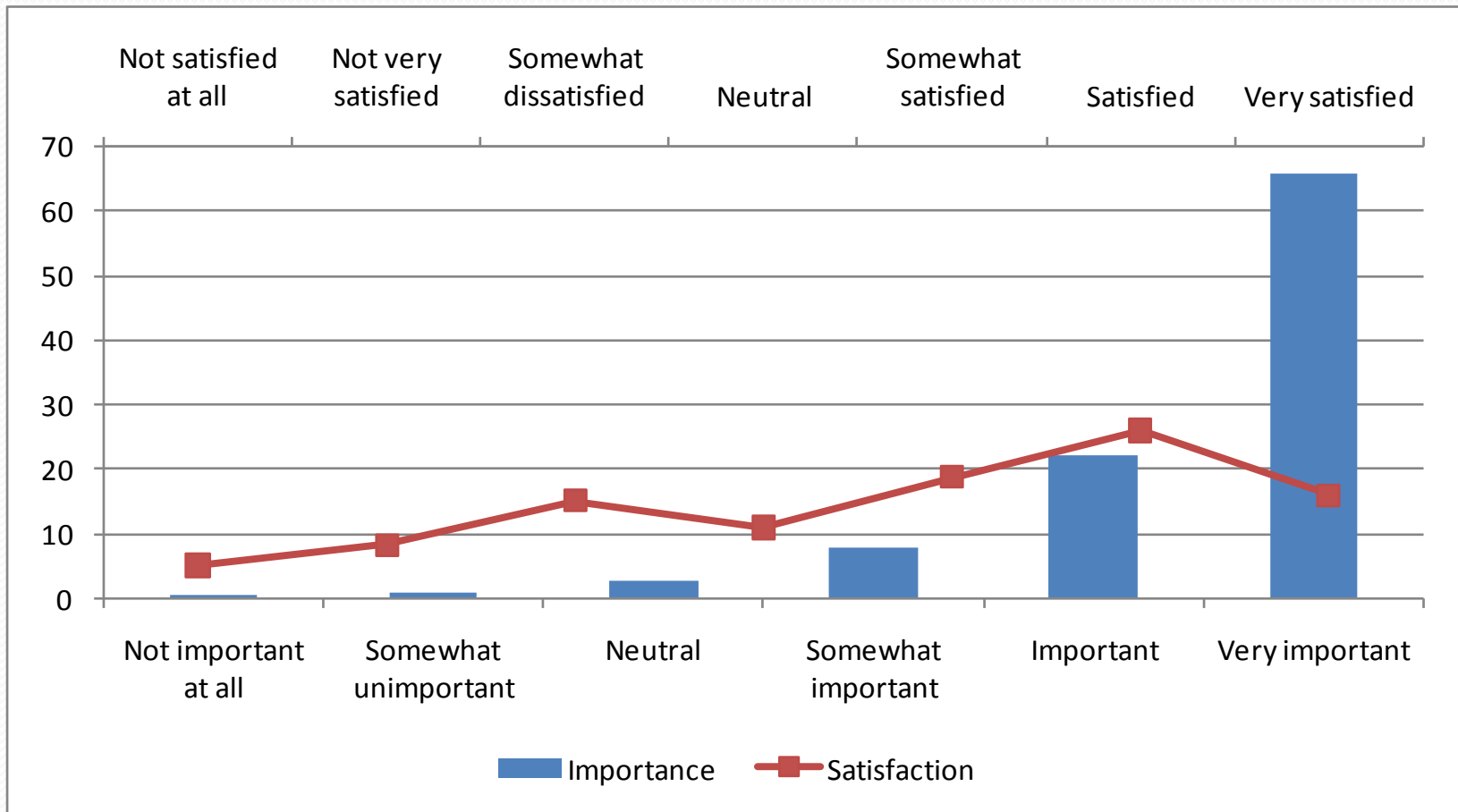
EXHIBIT 22: MY PROGRAM ALLOWS ME TO PACE MY STUDIES TO FIT MY LIFE AND WORK SCHEDULES.



Source: ALI, 2009; analysis by VSU SRA, June 2009.

ALI Results

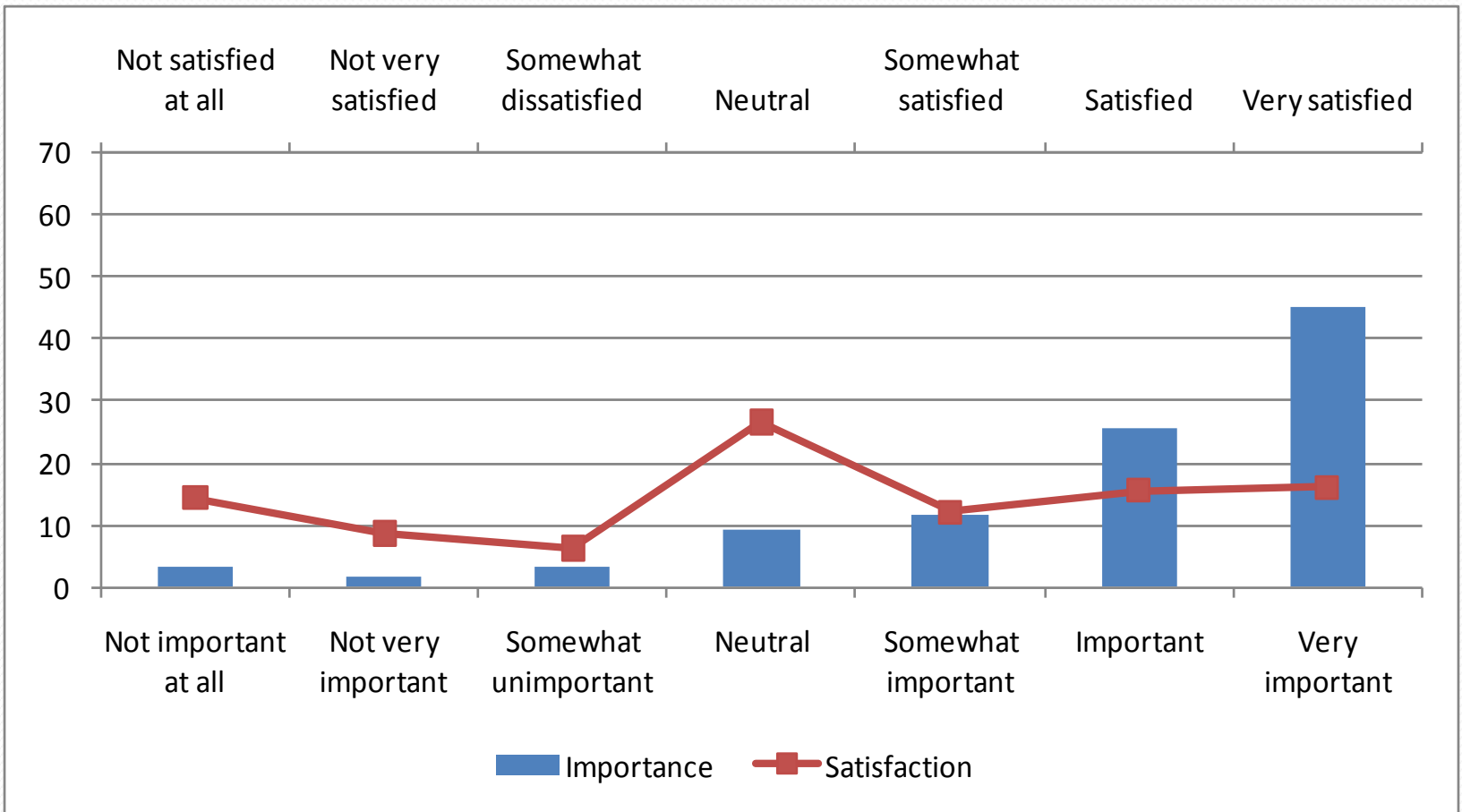
EXHIBIT 23: SUFFICIENT COURSE OFFERINGS WITHIN MY PROGRAM OF STUDY ARE AVAILABLE EACH TERM.



Source: ALI, 2009; analysis by VSU SRA, June 2009.

ALI Results

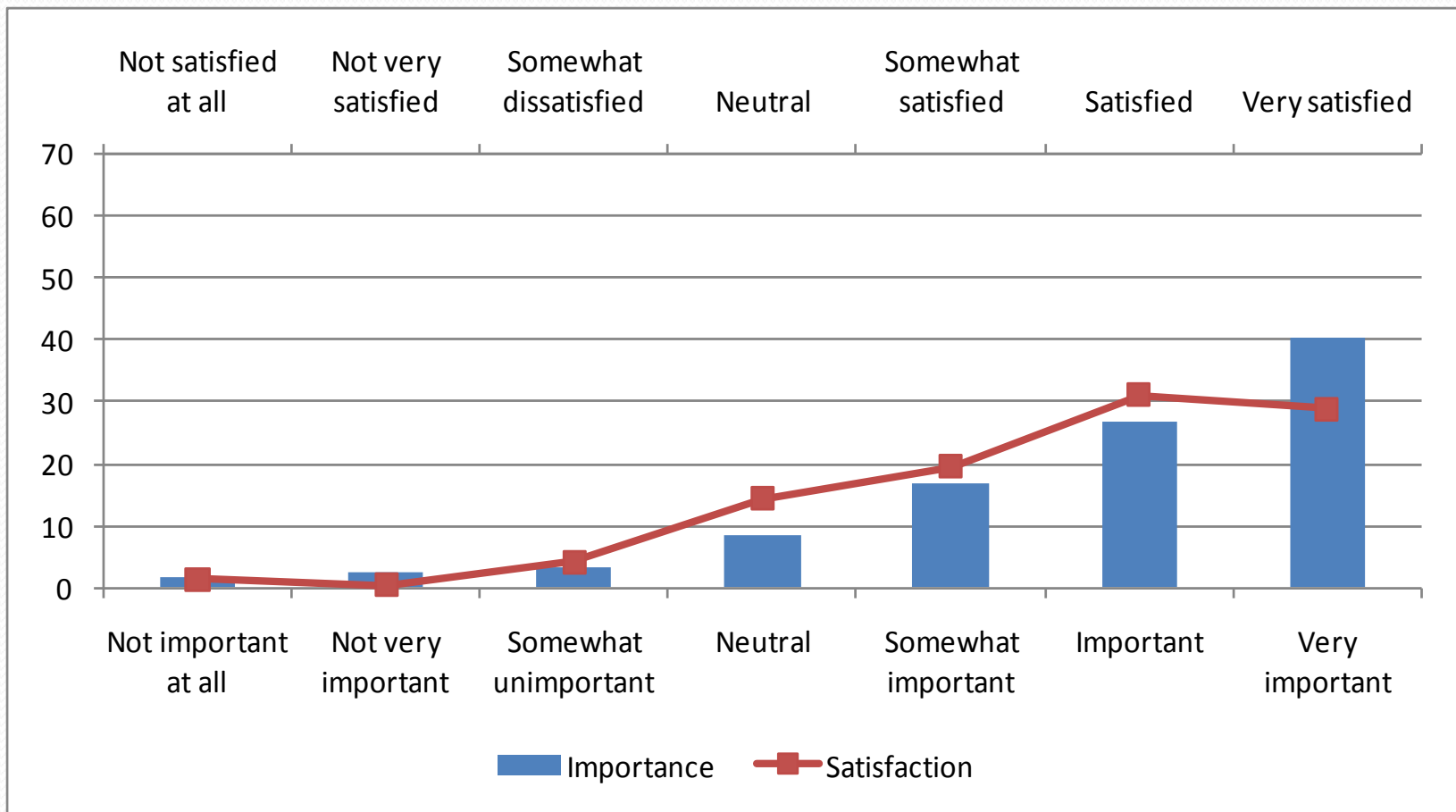
EXHIBIT 24: WHEN I MISS A DEADLINE OR FALL BEHIND IN MY STUDIES, SOMEONE FROM THE INSTITUTION CONTACTS ME.



Source: ALI, 2009; analysis by VSU SRA, June 2009.

ALI Results

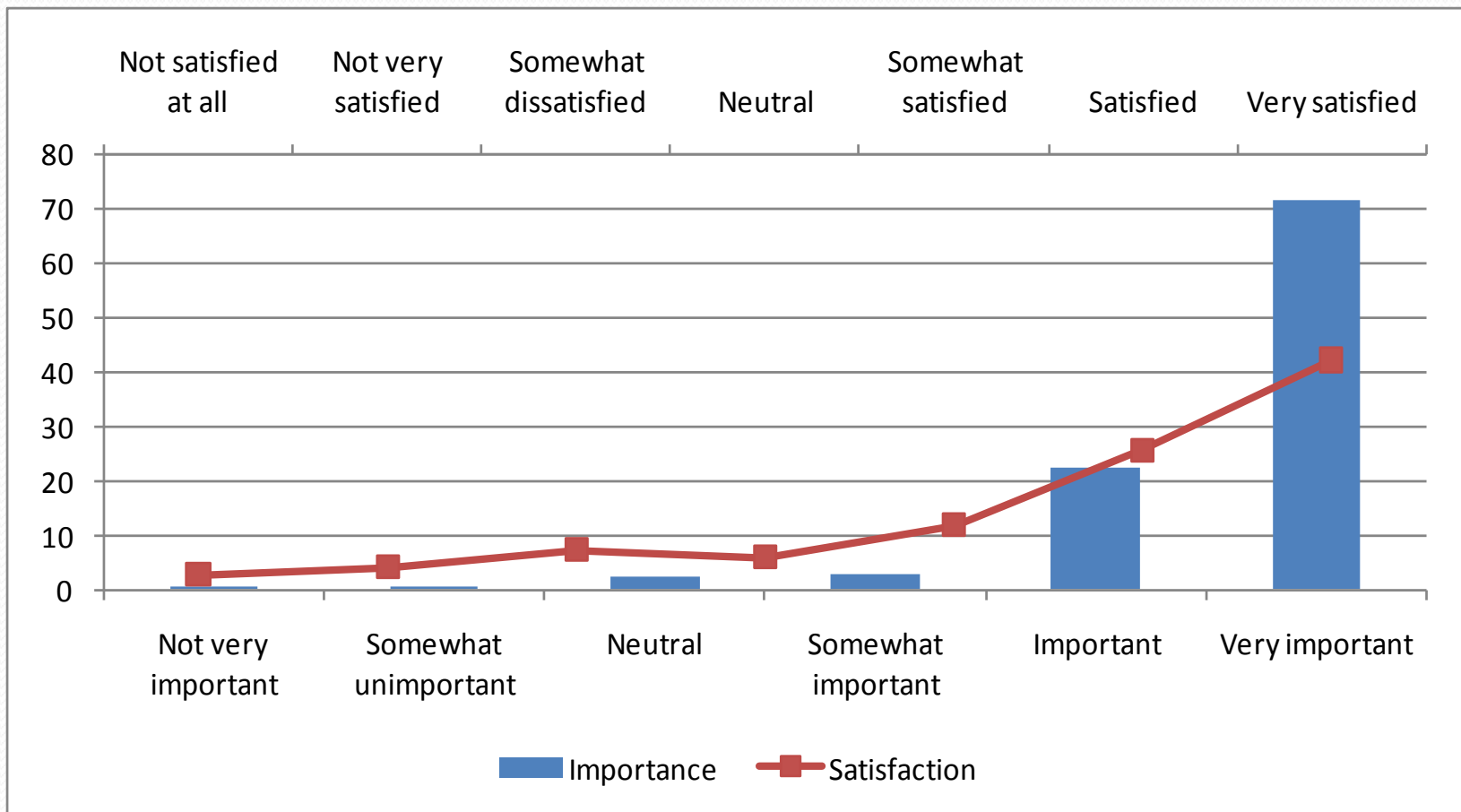
EXHIBIT 25: MY INSTRUCTORS ENCOURAGE STUDENT-TO-STUDENT INTERACTIONS THROUGH A VARIETY OF TECHNIQUES.



Source: ALI, 2009; analysis by VSU SRA, June 2009.

ALI Results

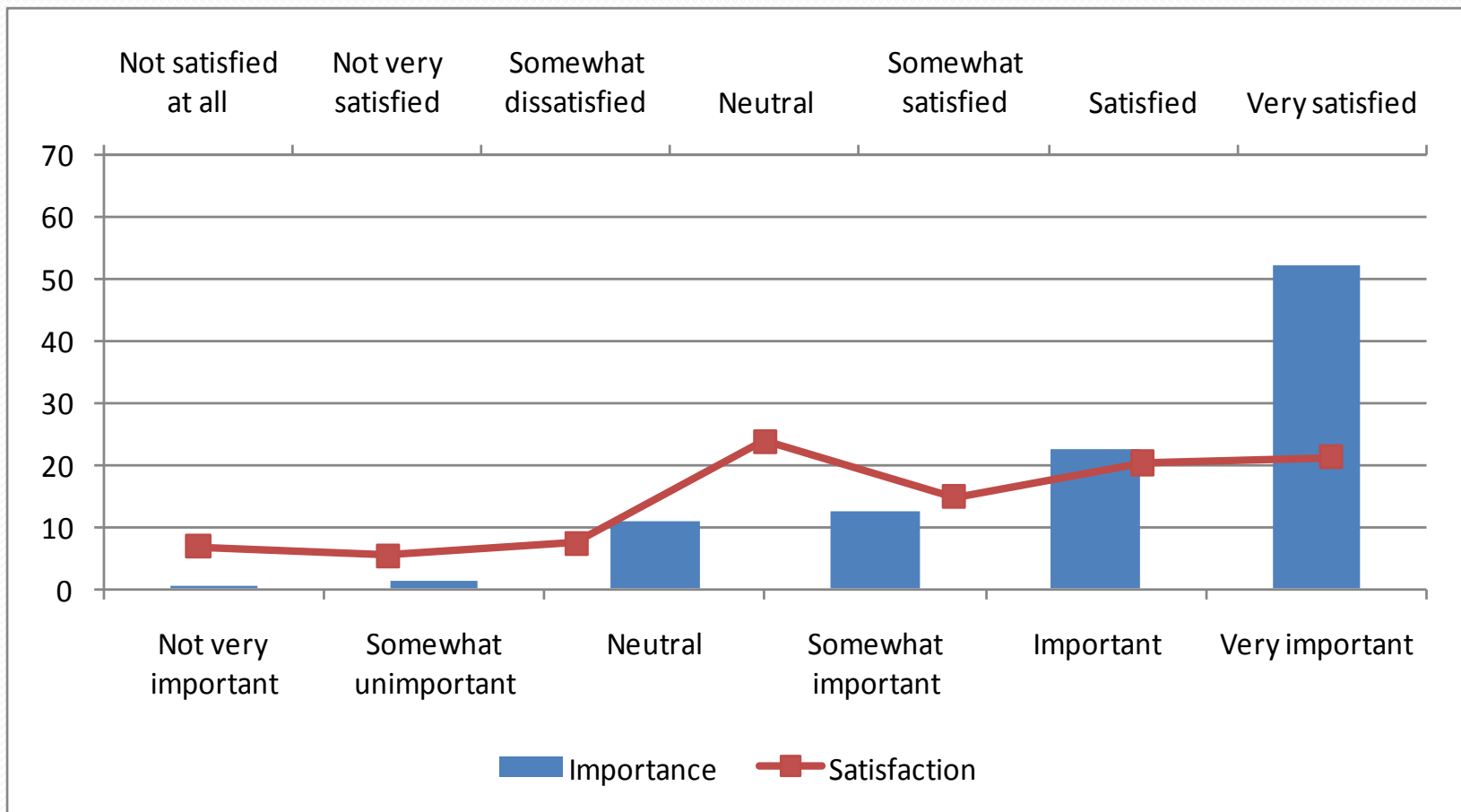
EXHIBIT 26: THIS INSTITUTION EXPLAINS WHAT IS NEEDED FOR ME TO COMPLETE MY PROGRAM HERE.



Source: ALI, 2009; analysis by VSU SRA, June 2009.

ALI Results

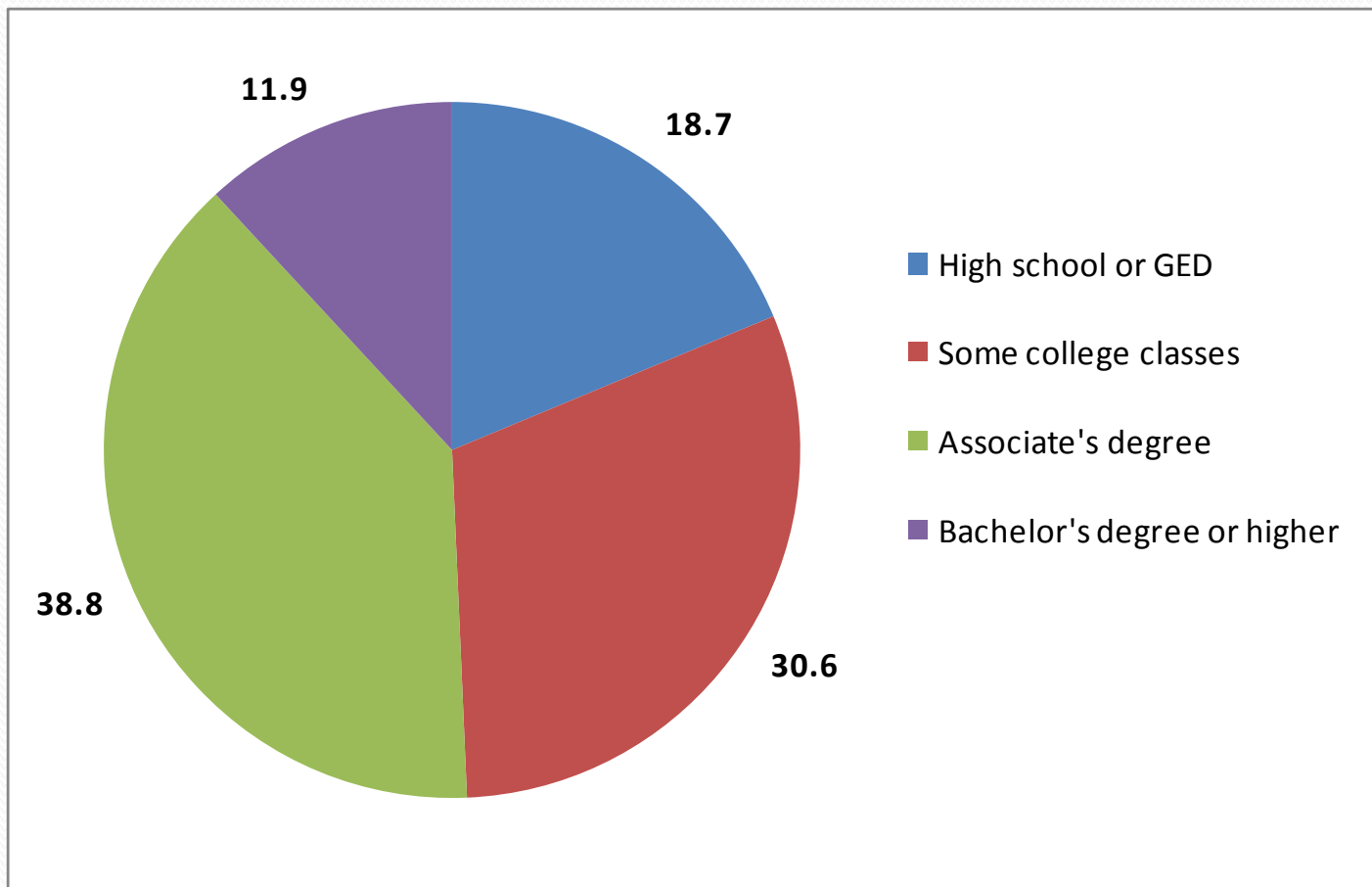
EXHIBIT 27: THIS INSTITUTION OFFERS STRATEGIES TO HELP ME COPE WITH THE MULTIPLE PRESSURES OF HOME, WORK, AND MY STUDIES.



Source: ALI, 2009; analysis by VSU SRA, June 2009.

ALI Results

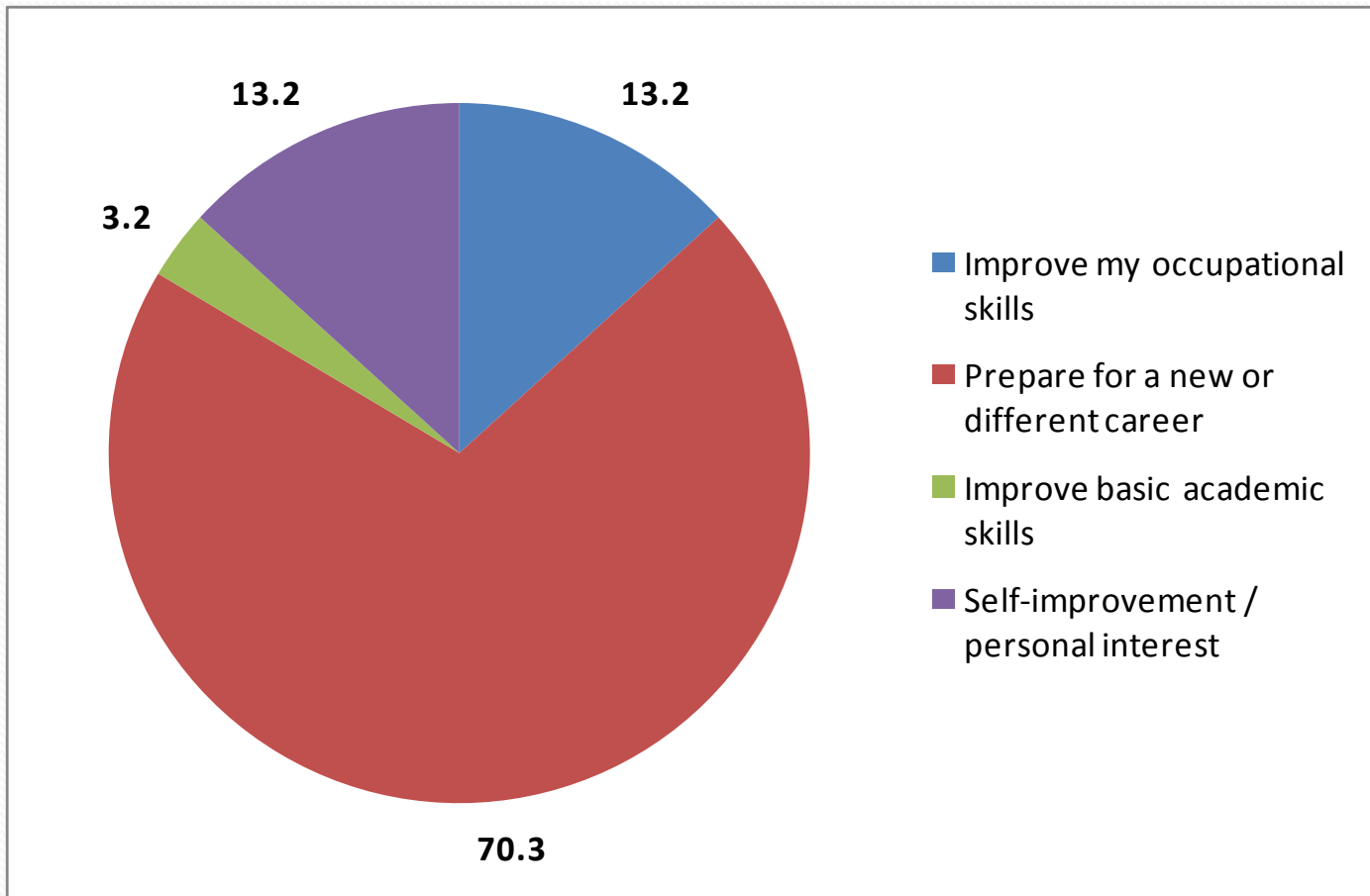
EXHIBIT 28: HIGHEST LEVEL OF EDUCATION COMPLETED BEFORE ENROLLING AT THIS COLLEGE



Source: ALI, 2009; analysis by VSU SRA, June 2009.

ALI Results

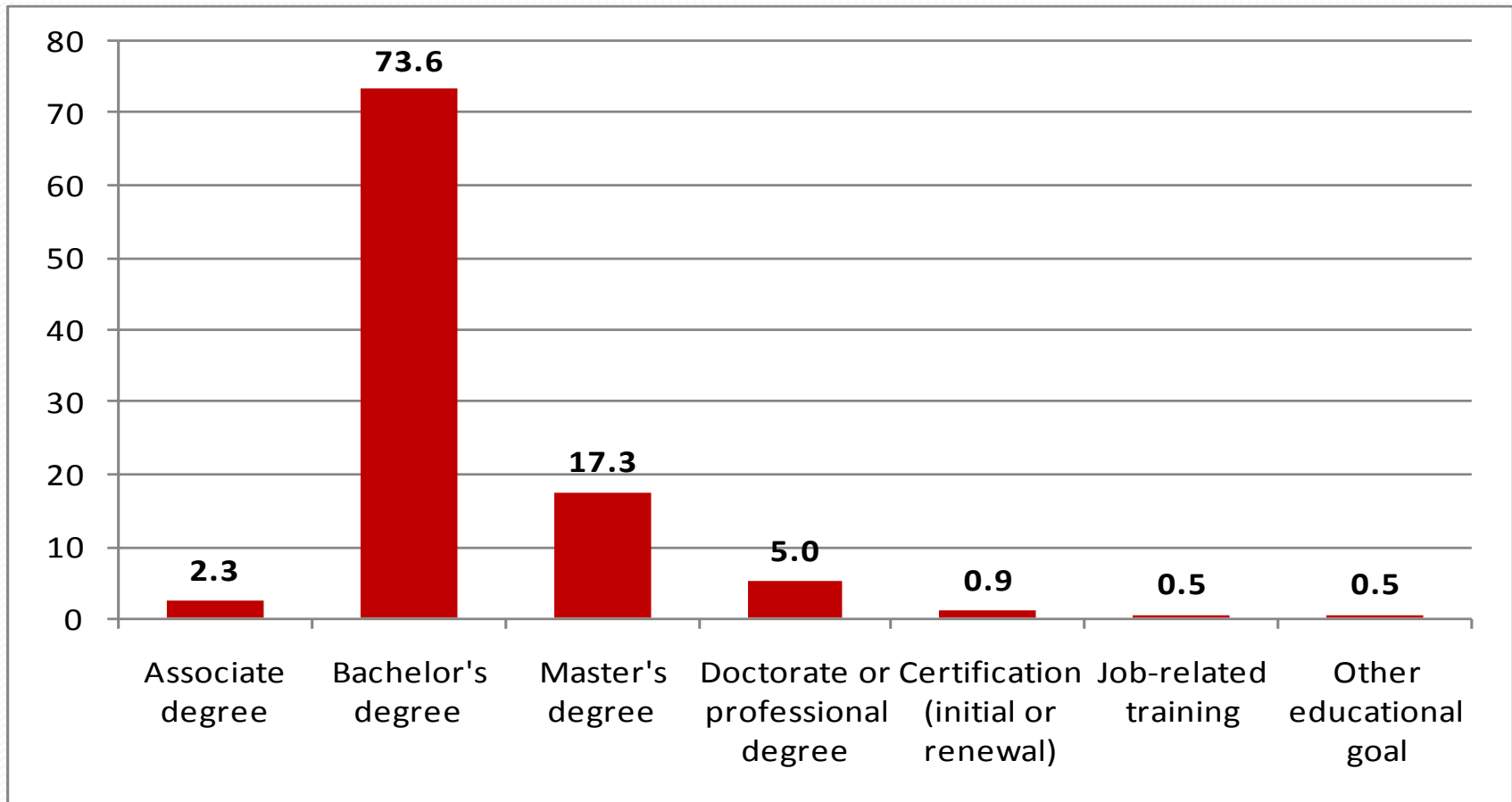
EXHIBIT 29: AT THIS COLLEGE, MY OBJECTIVE IS TO...



Source: ALI, 2009; analysis by VSU SRA, June 2009.

ALI Results

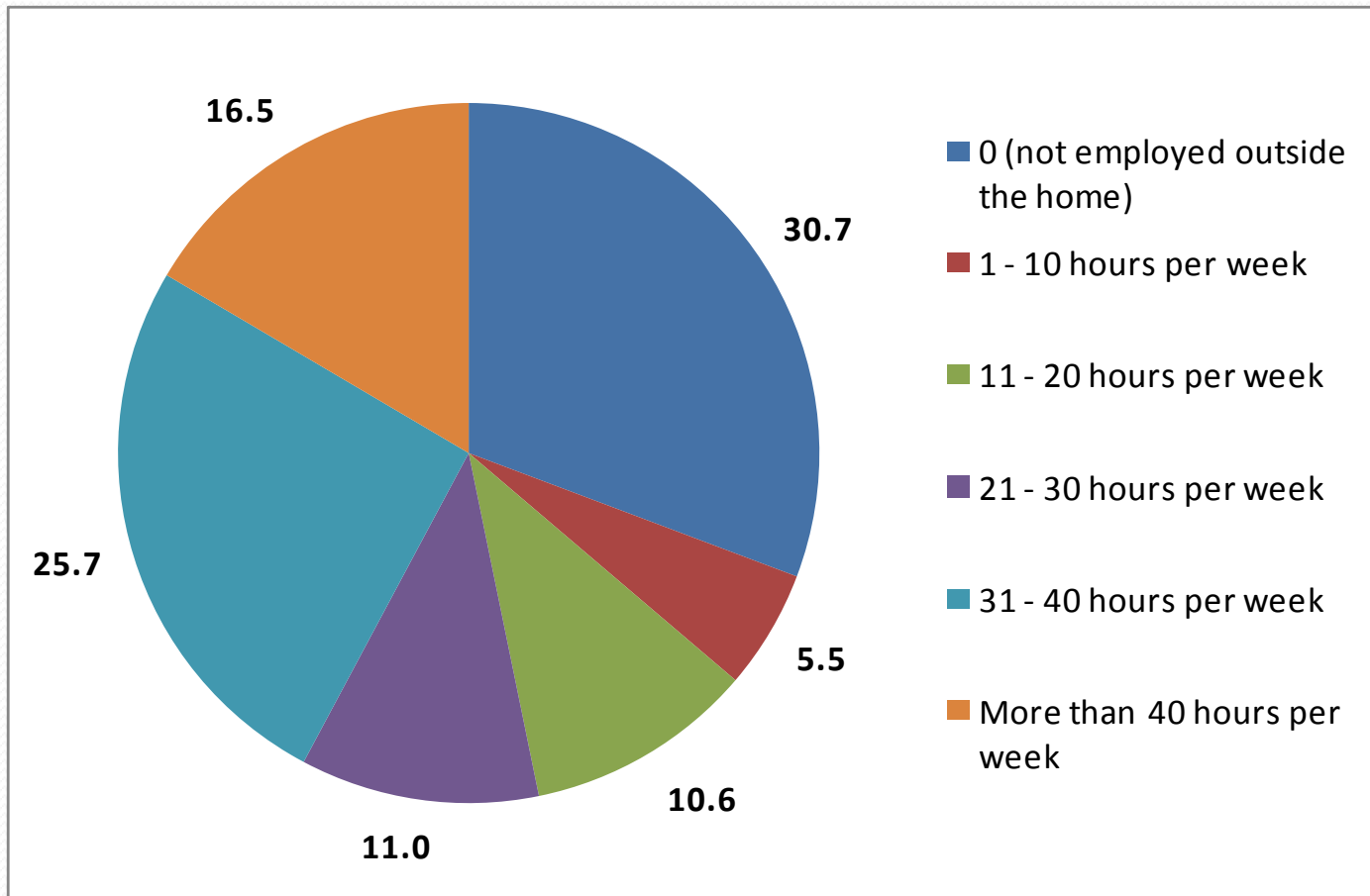
EXHIBIT 30: EDUCATIONAL PLANS



Source: ALI, 2009; analysis by VSU SRA, June 2009.

ALI Results

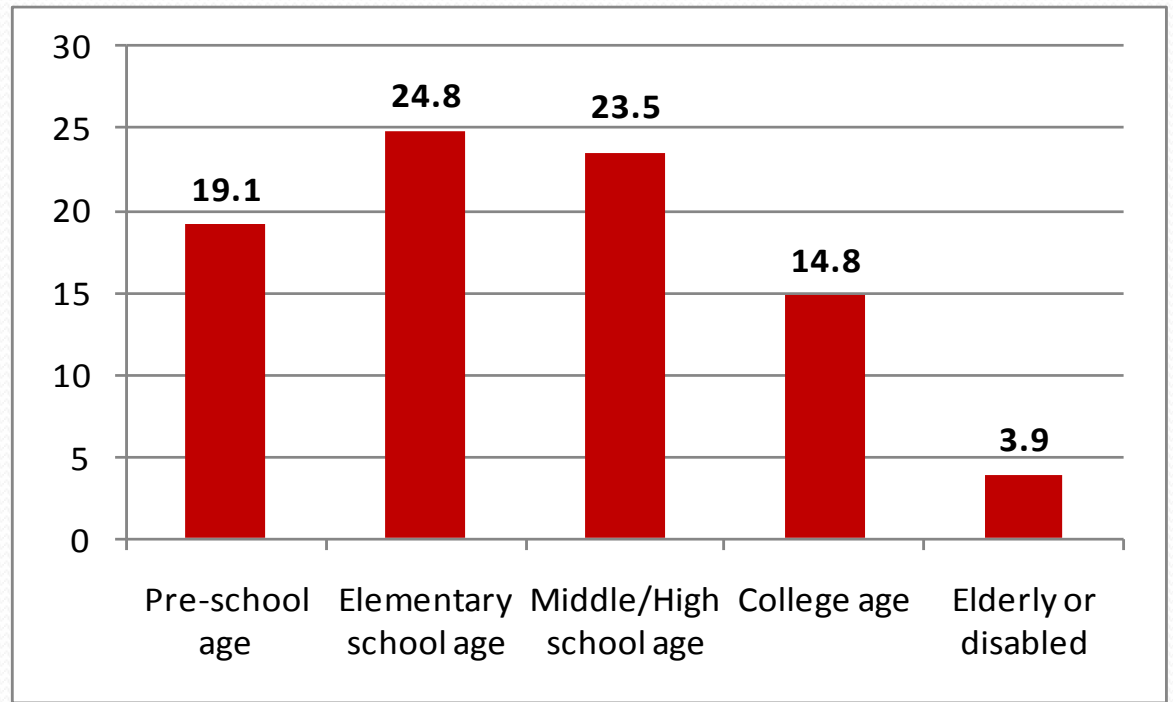
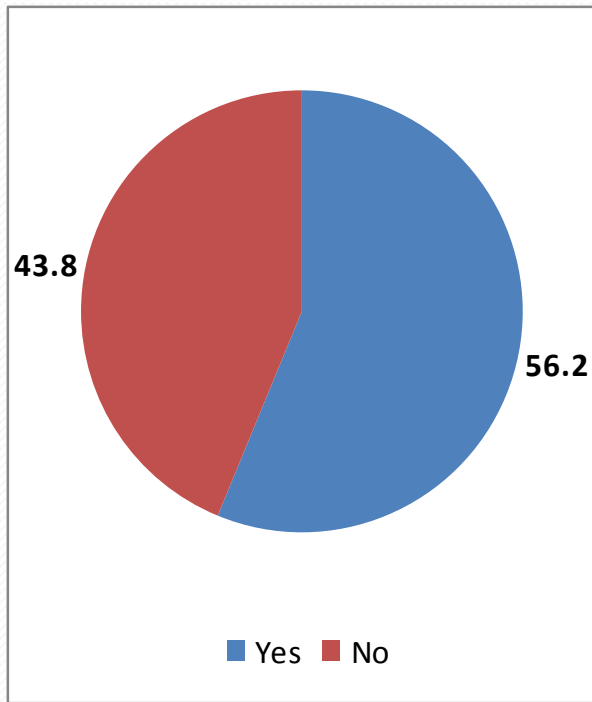
EXHIBIT 31: NUMBER OF HOURS EMPLOYED OUTSIDE THE HOME



Source: ALI, 2009; analysis by VSU SRA, June 2009.

ALI Results

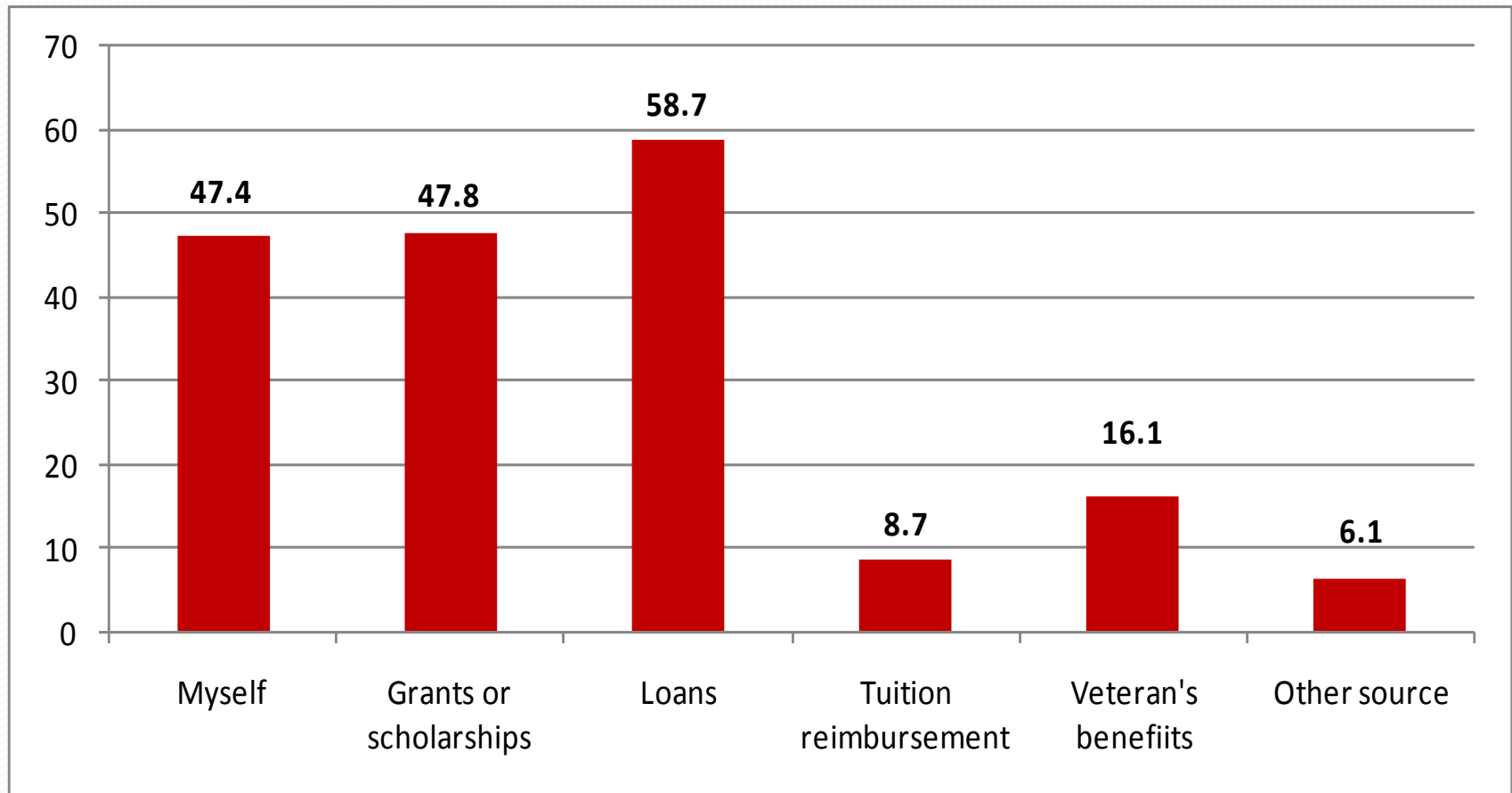
EXHIBIT 32: PERCENTAGE OF RESPONDENTS WITH DEPENDENTS AND DEPENDENTS BY AGE



Source: ALI, 2009; analysis by VSU SRA, June 2009.

ALI Results

EXHIBIT 33: PAYING FOR COLLEGE



Source: ALI, 2009; analysis by VSU SRA, June 2009.

Interested in more information ...

This presentation is on our website

<http://www.valdosta.edu/sra/presentations.shtml>



**Learning About Adult Learners:
Results From the Data**

Kristina M. Cragg, Ph.D.
Assistant to the President for Strategic Research & Analysis
kmcragg@valdosta.edu

Angela H. Anderson, M.A.
Senior Research Analyst
aselder@valdosta.edu

Valdosta State University – Strategic Research & Analysis
www.valdosta.edu/sra

52



Thank You

Questions and Comments

